



End Of Arm Tooling

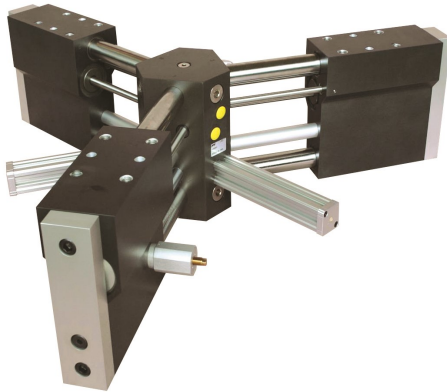


Solutions for Life



Grip the Impossible

End Of Arm Tooling



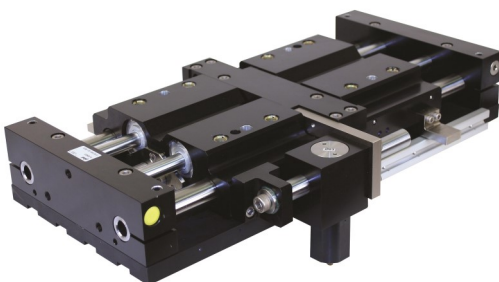
3-Jaw Heavy Duty Rim Gripper

- Handles 14-24" rims
- 300 mm diametral travel
- Rugged design withstands high impact and shock load



Heavy Duty Long Jaw Travel Gripper

- Designed for gripping large, round parts that vary in size
- Incorporates direct mounting to a robot without transition plates
- Rugged jaw and body construction to withstand high impact and shock loads



Low Profile Gripper

- Compact design
- High grip force and large moment capacities
- Rugged design withstands high impact and shock load



www.LDA.be - LDA@LDA.be
+32(0)2- 266 13 13



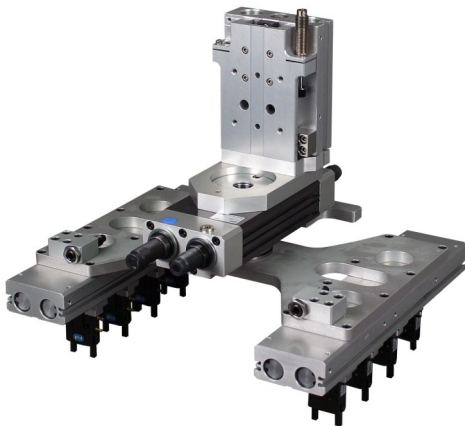
Grip the Impossible

End Of Arm Tooling



Modular Device

- Two grip and rotate devices incorporated into one assembly
- Mounting configuration designed to adapt direct to robot



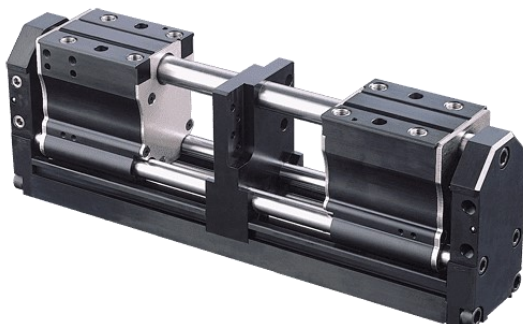
Modular Device

- Unique mounting plate configuration mounts to other components
- Flexibility on changing part pick up points with precision



Multiple Part Handling Actuator

- 75° jaw rotation
- Designed for end-of-arm robotic tooling
- Can mount 6-pick grippers
- Increased cycle speeds



Series GRR Guardian® High Capacity Pneumatic Parallel Gripper

- Robust design provides high grip force and large moment capacities
- Designed to withstand high impact and shock loads
- Double acting for internal and external gripping

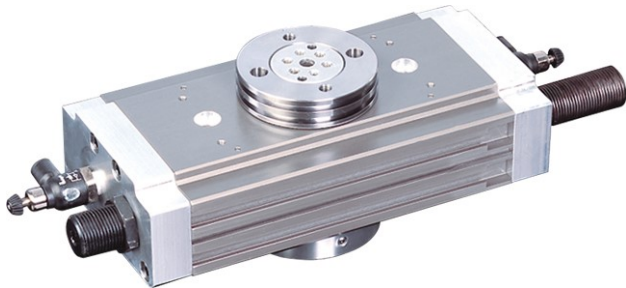


www.LDA.be - LDA@LDA.be
+32(0)2- 266 13 13



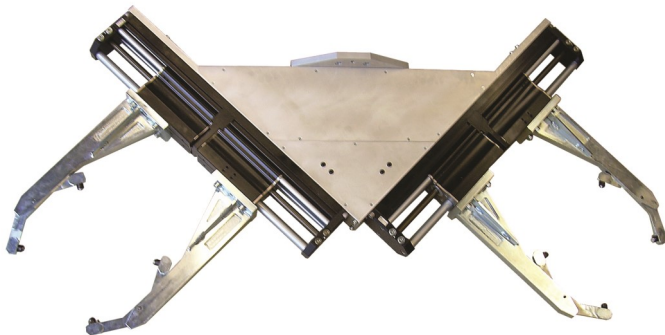
Grip the Impossible

End Of Arm Tooling



Series RI High Force Pneumatic Rotary Actuator

- High torque
- High axial and radial bearing load
- Thru hole shaft for built-in air communication ports



Unique Adaptors - ML308857

- Modular device consisting of two Series GRR grippers mounted to a bracket 90° from each other
- Bracket mounts directly to end of robot

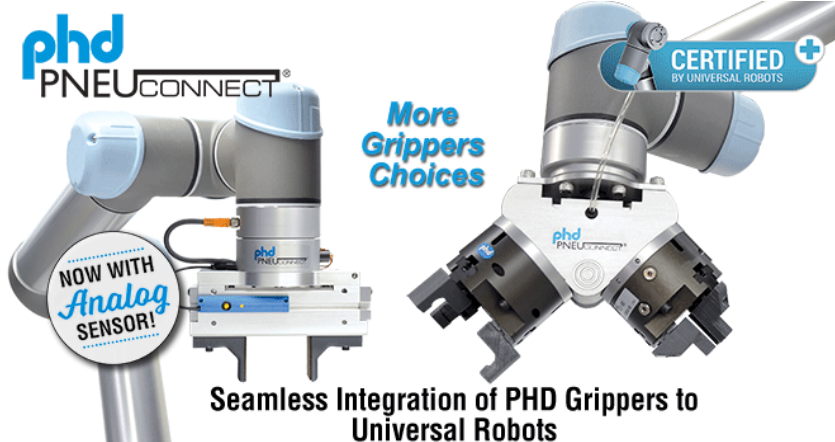
Pneu-Connect

PHD Pneu-Connect® is a cost-effective system providing seamless pneumatic end-effector integration for Universal Robots.

Pneu-Connect® features embedded directional control valves for control of an end-effector through the robot's tool port. The system easily attaches to the robot arm and is intuitively operated from the Universal Robot interface via the Pneu-Connect® URCap software package.

Five models of PHD pneumatic grippers are currently offered as single gripper solutions. The new X2 kits offer two grippers for maximum automation efficiency providing for a wide variety of applications.

Additionally, an analog sensor choice is now available for the Series GRH kits. The analog sensor provides jaw position feedback for increased programming functionality.



www.LDA.be - LDA@LDA.be
+32(0)2- 266 13 13



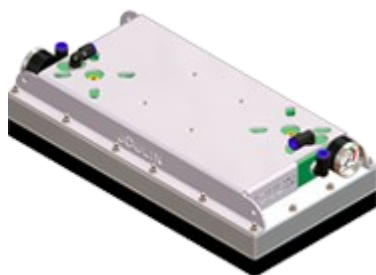
Grip the Impossible

End Of Arm Tooling



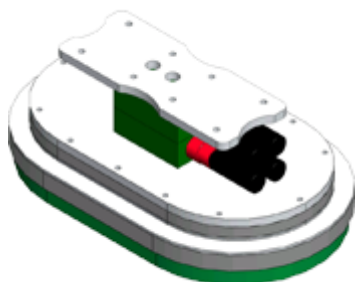
FLEXIGRIP

Available in 4 formats 80 mm square and round 100 mm round and 120 mm square. Easy to adjust and upgradable depending on your needs



PLUG & PICK

If the Flexigrip are too small for your needs, Plug and Pick is the way to go. Quick connect 10mm compressed air connections



BAG HANDLER

Pick up bags or other shrink wrapped products. Sized to fit your bags



EXTRUGRIP

All Joulin's technology in an aluminum profile, adaptable in length up to 3000mm



www.LDA.be - LDA@LDA.be
+32(0)2- 266 13 13



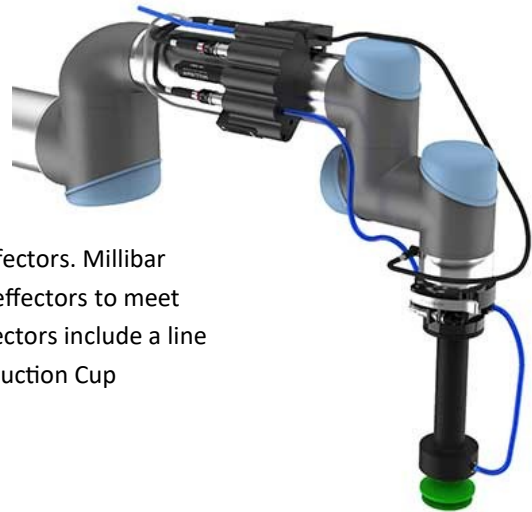
Grip the Impossible

End Of Arm Tooling

MILLIBAR
ROBOTICS
EOAT INNOVATION

End of Arm Tooling

End of Arm Tooling, or, EOAT is also often referred to as robot end effectors. Millibar offers pre-engineered robot end effectors and custom designed end effectors to meet your material handling challenges. Our Pre-engineered robot end effectors include a line of Arm Mounted Manifolds, Cable Harnesses, Wrist Extensions, and Suction Cup Mounts that are field proven and allow rapid robot deployment.



Manual Tool Changers Fast and Easy

The Millibar Manual Tool Changer allows operators to effortlessly change tools for high mix, low volume production applications.

Without any tools, quickly switch between adaptive grippers, vacuum grippers, camera calibration stylus, and more. Simply release the locking lever and slide a new tool into place.

Even if your facility has a variety of robot brands, the Millibar Manual Tool Changer ecosystem allows tools to be moved between robots.



Arm Mounted Manifolds

- Venturi vacuum cartridge.
- Digital vacuum switch for vacuum measurement.
- Instantaneous vacuum generation through close-coupled valves.
- Controllable blow-off for rapid part release and accurate part placement, leading to increased cycle speeds.
- Metric push-to-connect fittings for easy installation.
- **Designed to fit the UR3, UR5, and UR10 models including e-Series.**

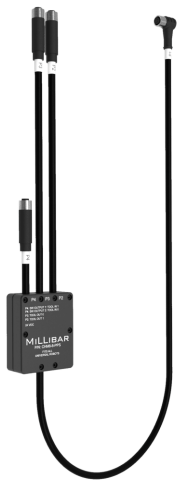


www.LDA.be - LDA@LDA.be
+32(0)2- 266 13 13



Suction Cup Mounts

Suction Cup Mounts are pre-engineered adapters for attaching a suction cup to your robot wrist fast and easy. Each suction cup mount bolts directly to the mounting flange on the robot wrist and supports various thread sizes for the suction cup port. Integral push to connect fittings are low profile and speed installation. See our large line of suction cups and suction pads.



Cable harness

This cable harness provides the necessary connections between the solenoid valve(s) and vacuum switch in Millibar's Arm Mounted Manifolds and the 8 Pin wrist connector on all models and series of UR Robots. This cable harness is integral to Millibar's plug and play end of arm tool components. Easily control solenoid valves to power venturi vacuum pumps and pneumatic grippers. Monitor system vacuum levels for arm mounted manifolds that include a vacuum switch to provide feedback to the robot controller. Inputs and outputs are easily controlled from Polyscope and set up is measured in seconds.



Extensions

Wrist Extensions are ideal for placing products into, or removing products from, a deep container such as a box/ tote. Each extension contains a flange that bolts directly to your robot's wrist and replicates that flange on the opposite end. Choose from 25mm to 150mm lengths. Add a Suction Cup Mount for attaching a suction cup to the end of the extension.

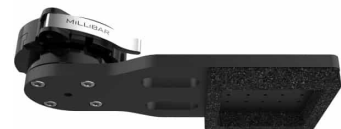
Dual head vacuum gripper

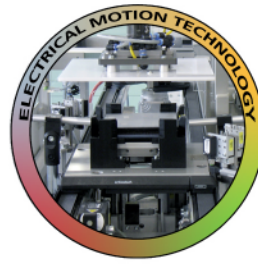
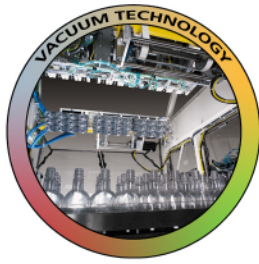


Tool plate with threaded suction cup mount



Low profile foam gripper for reaching into boxes





We look forward to your application.

LDA Belgium

Hoge Buizen 53
1980 Eppegem
Belgium

Tel. +32 (0)2-266 13 13

Mail: LDA@LDA.be

www.LDA.be