

Sandwich pressure regulator with manual adjust locking knob.

OPERATIONAL BENEFITS

1. Easy mounting : saves on installation costs in comparison with inline regulators.
2. Allows to have compact, all-included units.
3. Large orifice provides high flow.
4. Various functions available.
5. Simple, reliable and solid design.



PR82A

PR63D

PR65C

HOW TO ORDER

REGULATORS FOR "PLUG-IN" VALVES

Gauges	Single pressure Regulator A end Same regulated pressure to ports A and B	Dual pressure Regulator A end Regulated pressure to port A *	Dual pressure Regulator B end Regulated pressure to port B *	Dual pressure Dual regulator Two regulated pressures to ports A and B *
No gauge	PR82A-GADA	PR82A-GCDA	PR82A-GBDA	PR82A-GDDA
Gauge parallel to regulator	PR82A-GACA	PR82A-GCCA	PR82A-GBCA	PR82A-GDCA
Gauge perpendicular to regulator	PR82A-GABA	PR82A-GCBA	PR82A-GBBA	PR82A-GDBA

REGULATORS FOR "NON PLUG-IN" AND REMOTE AIR VALVES

Gauges	Single pressure Regulator A end Same regulated pressure to ports A and B	Dual pressure Regulator A end Regulated pressure to port A *	Dual pressure Regulator B end Regulated pressure to port B *	Dual pressure Dual regulator Two regulated pressures to ports A and B *
No gauge	PR82A-HADA	PR82A-HCDA	PR82A-HBDA	PR82A-HDDA
Gauge parallel to regulator	PR82A-HACA	PR82A-HCCA	PR82A-HBCA	PR82A-HDCA
Gauge perpendicular to regulator	PR82A-HABA	PR82A-HCBA	PR82A-HBBA	PR82A-HDBA

Note : regulating range for above models is 0-120 PSI. For other ranges see technical data page.

* To be used with dual pressure valves.

ADJUSTMENT OPTIONS

PR82A-xxxx

- Replace by A for "plug-in" with slotted stem adjustment.
- Replace by B for "non plug-in" with slotted stem adjustment.
- Replace by K for "plug-in" with locking slotted stem adjustment.
- Replace by L for "non plug-in" with locking slotted stem adjustment.

****SELECTOR OPTIONS** selects pressure to inlet of adjacent valve.

PR82A-xxxx

- Replace by S for dual regulators.
- Replace by T for regulator on "B" end with by-pass on "A" end.

** This option must be used with a single pressure valve and selector manifold base.

PRA1A

PRA2D

PRA3C

PR125A

PR250B

TECHNICAL DATA

Fluid :	Compressed air, inert gases
Pressure range :	0 to 150 PSI
Regulating range :	0 to 120 PSI (other ranges see below)
Lubrication :	Not required, if used select a medium aniline point lubricant (between 180°F to 210°F)
Filtration :	40 µ
Temperature range :	0°F to 120°F (-18°C to 50°C)
Flow :	(1.08 C _v)

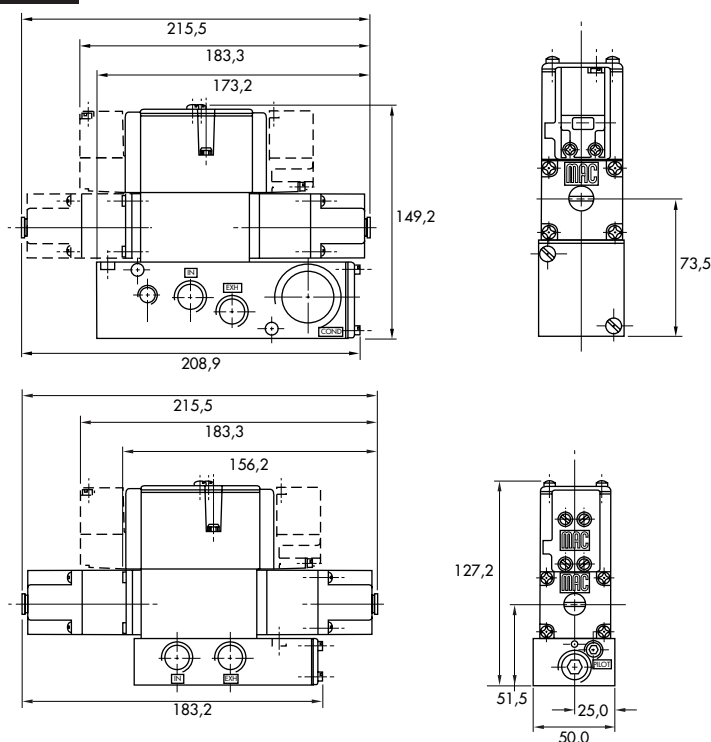
- Spare parts :
- Pressure regulator (less sandwich block) : PR82A-J0AA (KNOB), PR82A-C0AA (SLOTTED STEM), PR82A-M0AA (LOCKING SLOTTED STEM).
 - Gauges : N-82016-01 (0-120 PSI perpendicular)
N-82016-02 (0-120 PSI parallel)
N-82016-03 (0-80 PSI perpendicular)
N-82016-04 (0-80 PSI parallel)
N-82016-05 (0-30 PSI perpendicular)
N-82016-06 (0-30 PSI parallel)

Regulating range options : PR82A-XXXXA

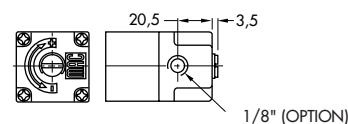
- | | |
|--------------|---|
| Replace by B | - 0 to 80 PSI |
| Replace by C | - 0 to 30 PSI |
| Replace by D | - 0 to 120 PSI on "A" end
- 0 to 80 PSI on "B" end |
| Replace by E | - 0 to 120 PSI on "B" end
- 0 to 80 PSI on "A" end |
| Replace by F | - 0 to 120 PSI on "A" end
- 0 to 30 PSI on "B" end |
| Replace by G | - 0 to 120 PSI on "B" end
- 0 to 30 PSI on "A" end |
| Replace by H | - 0 to 80 PSI on "A" end
- 0 to 30 PSI on "B" end |
| Replace by J | - 0 to 80 PSI on "B" end
- 0 to 30 PSI on "A" end |

DIMENSIONS

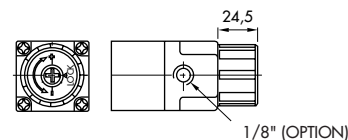
Dimensions shown are metric (mm)



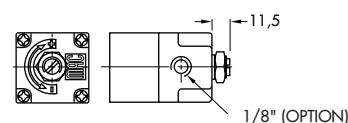
SLOTTED STEM



LOCKING KNOB



LOCKING SLOTTED STEM



Sandwich pressure regulator with air pilot adjust.

OPERATIONAL BENEFITS

1. Easy mounting : saves on installation costs in comparison with inline regulators.
2. Allows to have compact, all-included units.
3. Large orifice provides high flow.
4. Various functions available.
5. Simple, reliable and solid design.



PR82A

PR63D

PR65C

HOW TO ORDER

REGULATORS FOR "PLUG-IN" VALVES

Gauges	Single pressure Regulator A end Same regulated pressure to ports A and B	Dual pressure Regulator A end Regulated pressure to port A *	Dual pressure Regulator B end Regulated pressure to port B *	Dual pressure Dual regulator Two regulated pressures to ports A and B *
No gauge	PR82A-DADA	PR82A-DCDA	PR82A-DBDA	PR82A-DDDA
Gauge parallel to regulator	PR82A-DACA	PR82A-DCCA	PR82A-DBCA	PR82A-DDCA
Gauge perpendicular to regulator	PR82A-DABA	PR82A-DCBA	PR82A-DBBA	PR82A-DDBA

REGULATORS FOR "NON PLUG-IN" AND REMOTE AIR VALVES

Gauges	Single pressure Regulator A end Same regulated pressure to ports A and B	Dual pressure Regulator A end Regulated pressure to port A *	Dual pressure Regulator B end Regulated pressure to port B *	Dual pressure Dual regulator Two regulated pressures to ports A and B *
No gauge	PR82A-EADA	PR82A-ECDA	PR82A-EBDA	PR82A-EDDA
Gauge parallel to regulator	PR82A-EACA	PR82A-ECCA	PR82A-EBCA	PR82A-EDCA
Gauge perpendicular to regulator	PR82A-EABA	PR82A-ECBA	PR82A-EBBA	PR82A-EDBA

* To be used with dual pressure valves.

PRA1A

PRA2D

PRA3C

PR125A

PR250B

TECHNICAL DATA

Fluid :	Compressed air, inert gases
Pressure range :	0 to 150 PSI
Regulating range :	0 to 120 PSI
Lubrication :	Not required, if used select a medium aniline point lubricant (between 180°F to 210°F)
Filtration :	40 µ
Temperature range :	0°F to 120°F (-18°C to 50°C)
Flow :	(1.08 C _v)

- Spare parts :
- Pressure regulator (less sandwich block) : PR82A-FOAA.
 - Gauges : N-82016-01 (0-120 PSI perpendicular)
N-82016-02 (0-120 PSI parallel)

DIMENSIONS

Dimensions shown are metric (mm)

