

Plug-in sandwich pressure regulator with manual adjust knob

OPERATIONAL BENEFITS

1. Easy mounting: saves on installation costs in comparison with inline regulators.
2. Compact all-included units.
3. Large orifice provides high flow.
4. Various functions available.
5. Simple, reliable and solid design.



PR37A

PR42B

PR46A

PR47A

PR48B

PR92C

HOW TO ORDER

REGULATORS FOR INTERNAL PILOT (CODED FOR KNOB ADJUSTMENT)

Gage	Single pressure Regulator 14 end Same regulated pressure to ports 2 and 4	Single pressure Regulator 12 end Same regulated pressure to ports 2 and 4	Dual pressure Regulator 14 end Regulated pressure to port 4 *	Dual pressure Regulator 12 end Regulated pressure to port 2 *	Dual pressure Dual regulator Two regulated pressures to ports 2 and 4 *
No gage	PRP2B-AAAA	PRP2B-AEAA	PRP2B-ABAA	PRP2B-AFAA	PRP2B-AJAA
Glycerine gage	PRP2B-AABA	PRP2B-AEBA	PRP2B-ABBA	PRP2B-AFBA	PRP2B-AJCA
Non-filled gage	PRP2B-AADA	PRP2B-AEDA	PRP2B-ABDA	PRP2B-AFDA	PRP2B-AJEA

PR93A

PRA01A

PRA02A

REGULATORS FOR EXTERNAL PILOT AND REMOTE AIR (CODED FOR KNOB ADJUSTMENT)

Gage	Single pressure Regulator 14 end Same regulated pressure to ports 2 and 4	Single pressure Regulator 12 end Same regulated pressure to ports 2 and 4	Dual pressure Regulator 14 end Regulated pressure to port 4 *	Dual pressure Regulator 12 end Regulated pressure to port 2 *	Dual pressure Dual regulator Two regulated pressures to ports 2 and 4 *
No gage	PRP2B-BAAA	PRP2B-BEAA	PRP2B-BBAA	PRP2B-BFAA	PRP2B-BJAA
Glycerine gage	PRP2B-BABA	PRP2B-BEBA	PRP2B-BBBA	PRP2B-BFBA	PRP2B-BJCA
Non-filled gage	PRP2B-BADA	PRP2B-BEDA	PRP2B-BBDA	PRP2B-BFDA	PRP2B-BJEA

PRA1A

PRP1A

PRA2D

PRP2B

* For use with dual pressure valves.

Note: Regulating range for above models is 0-150 PSI. For other ranges, see technical data page.

ADJUSTMENT OPTIONS

PRP2B-XXXX

- G** for slotted stem (internal pilot)
- H** for slotted stem (external pilot)
- K** for slotted stem with locknut (internal pilot)
- L** for slotted stem with locknut (external pilot)

Notes:

1. Valves used with above models must be external pilot models.
2. Cannot field convert regulator block from single pressure to dual pressure.
3. Cannot field convert from internal pilot to external pilot.
4. Wired for double solenoid valves.

PRA3C

PRP3B

TECHNICAL DATA

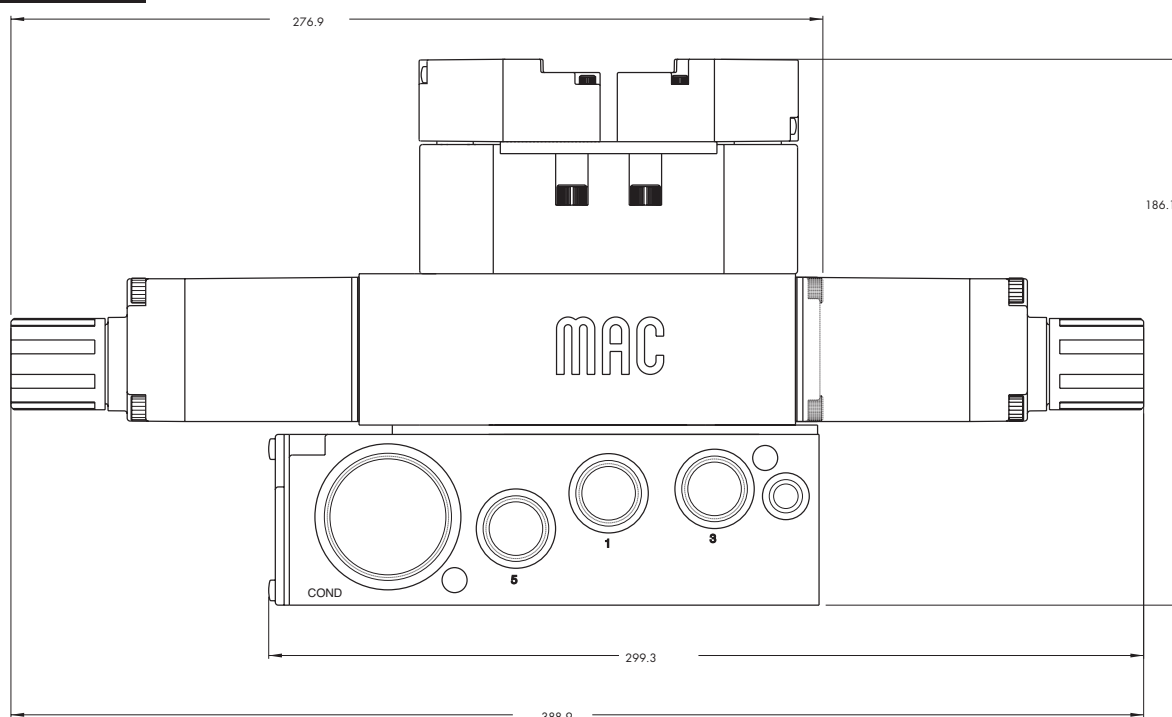
Fluid :	Compressed air, inert gases
Pressure range :	0 to 150 PSI
Regulating range :	0 to 150 PSI (other ranges see below)
Lubrication :	Not required, if used select a medium aniline point lubricant (between 180°F to 210°F)
Filtration :	40 µ
Temperature range :	0°F to 120°F (-18°C to +50°C)
Flow :	3.1 C _v

Spare parts :

- Pressure regulator (less sandwich block) : PRP2B-COAA (knob), PRP2B-JOAA (slotted stem), PRP2B-MOAA (slotted stem with locknut)
- Regulator block to base mounting screw: 19177
- Regulating range option: PRP2B-xxxA
 - Replace by B for 0 to 100 PSI
 - Replace by C for 0 to 45 PSI

DIMENSIONS

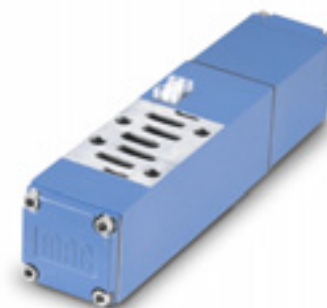
Dimensions shown are metric (mm)



Plug-in sandwich pressure regulator with air pilot adjust

OPERATIONAL BENEFITS

1. Easy mounting: saves on installation costs in comparison with inline regulators.
2. Compact all-included units.
3. Large orifice provides high flow.
4. Various functions available.
5. Simple, reliable and solid design.



PR37A

PR42B

PR46A

PR47A

PR48B

PR92C

HOW TO ORDER

REGULATORS FOR INTERNAL PILOT

Gage	Single pressure Regulator 14 end Same regulated pressure to ports 2 and 4	Single pressure Regulator 12 end Same regulated pressure to ports 2 and 4	Dual pressure Regulator 14 end Regulated pressure to port 4 *	Dual pressure Regulator 12 end Regulated pressure to port 2 *	Dual pressure Dual regulator Two regulated pressures to ports 2 and 4 *
No gage	PRP2B-DAAA	PRP2B-DEAA	PRP2B-DBAA	PRP2B-DFAA	PRP2B-DJAA
Glycerine gage	PRP2B-DABA	PRP2B-DEBA	PRP2B-DBBA	PRP2B-DFBA	PRP2B-DJCA
Non-filled gage	PRP2B-DADA	PRP2B-DEDA	PRP2B-DBDA	PRP2B-DFDA	PRP2B-DJEA

PR93A

PRA01A

PRA02A

REGULATORS FOR EXTERNAL PILOT AND REMOTE AIR

Gage	Single pressure Regulator 14 end Same regulated pressure to ports 2 and 4	Single pressure Regulator 12 end Same regulated pressure to ports 2 and 4	Dual pressure Regulator 14 end Regulated pressure to port 4 *	Dual pressure Regulator 12 end Regulated pressure to port 2 *	Dual pressure Dual regulator Two regulated pressures to ports 2 and 4 *
No gage	PRP2B-EAAA	PRP2B-EEAA	PRP2B-EBAA	PRP2B-EFAA	PRP2B-EJAA
Glycerine gage	PRP2B-EABA	PRP2B-EEBA	PRP2B-EBBA	PRP2B-EFBA	PRP2B-EJCA
Non-filled gage	PRP2B-EADA	PRP2B-EEDA	PRP2B-EBDA	PRP2B-EFDA	PRP2B-EJEA

PRA1A

PRP1A

PRA2D

PRP2B

* - To be used with dual pressure valves.

Notes:

1. Valves used with above models must be external pilot models.
2. Cannot field convert regulator block from single pressure to dual pressure.
3. Cannot field convert from internal pilot to external pilot.
4. Wired for double solenoid valves.

PRA3C

PRP3B

TECHNICAL DATA

Fluid :	Compressed air, inert gases
Pressure range :	0 to 150 PSI
Regulating range :	0 to 150 PSI
Lubrication :	Not required, if used select a medium aniline point lubricant (between 180°F to 210°F)
Filtration :	40 µ
Temperature range :	0°F to 120°F (-18°C to +50°C)
Flow :	3.1 C _v

Spare parts :

- Pressure regulator (less sandwich block): PRP2B-F0AA
- Body/block to base mounting screw: 19177

DIMENSIONS

Dimensions shown are metric (mm)

