

## PV07 Series

The MAC Pulse Valve series is designed to be a direct drop-in replacement for existing pulse technology. The MAC solution utilizes a long life, bonded spool design, instead of the traditional diaphragm style. MAC also uses a balanced pilot valve that isolates the solenoid from airline contamination. Available with integral solenoid pilot as well as bleed pilot configurations.

### DIRECT DROP-IN

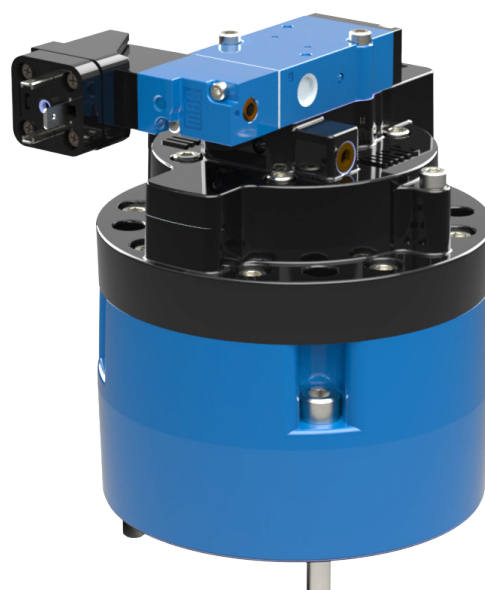
The MAC Pulse Valve is available with various adapter options. These adapter options allow the MAC Valve to directly replace the diaphragm technology with our bonded spool technology without disturbing plumbing. The MAC bleed configuration works with existing remotely located solenoids.

### HARSH ENVIRONMENT COMPATIBLE

An aluminium die-cast body, Viton® seals and an environmentally protected solenoid are standard features. These materials allow for a wide standard temperature rating and high degree of chemical resistance.

### MAINTENANCE

Lower cost of ownership through reduction in downtime due to high reliability. When necessary, maintenance is simplified with available spool kits.

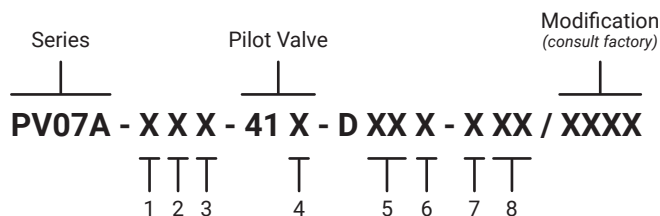


### PRODUCT CHARACTERISTICS & PERFORMANCE

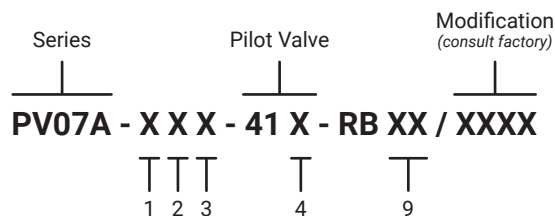
|                             |                                 |
|-----------------------------|---------------------------------|
| Flow                        | 70.0 Cv                         |
| Temperature Range • Nitrile | -18°C / 60°C<br>0°F / 140°F     |
| Temperature Range • Viton   | -29°C / +110°C<br>-20°F / 230°F |
| Pressure Range              | 2.75 - 8.27 bar<br>40 - 120 PSI |

# MAC Pulse Valve Series PV07 How To Order

## INTEGRAL PILOT VALVE



## REMOTE BLEED VALVE



### Configurations Options

| 1. Spool Type                                    | 2. Port Size & Thread Type     | 3. Internal / External Pilot            | 4. Pilot Exhaust       |
|--|--------------------------------|---|------------------------|
| <b>0</b> Base only                               | <b>0</b> Basic valve, no base  | <b>0</b> Base only                      | <b>P</b> Piped exhaust |
| <b>A</b> NC main with memory spring Viton® seals | <b>A</b> 1 1/2" NPTF MAC base  | <b>A</b> Internal pilot (NPTF threads)  |                        |
|  | <b>C</b> 1 1/2" BSPPL MAC base | <b>B</b> External pilot (NPTF threads)  |                        |
|  | <b>E</b> 1 1/2" BSPTR MAC base | <b>C</b> External pilot (BSPPL threads) |                        |
|  |                                | <b>D</b> External pilot (BSPTR threads) |                        |
|  |                                | <b>E</b> Internal pilot (BSPPL threads) |                        |
|  |                                | <b>F</b> Internal pilot (BSPTR threads) |                        |

### Solenoid Valve Options

| 5. Voltage                   | 6. Lead Wire Length              | 7. Manual Override   | 8. Electrical Connector                      |
|------------------------------|----------------------------------|----------------------|--|
| AC Voltage                   | <b>A</b> 18" / 45 cm             | <b>1</b> Non locking | <b>BA</b> Grommet                            |
| <b>JA</b> 110/50 VAC • 2.9 W | <b>B</b> 24" / 60 cm             |                      | <b>BK</b> Grommet with diode                 |
| <b>JB</b> 220/50 VAC • 2.9 W | <b>C</b> 36" / 90 cm             |                      | <b>CM</b> Metal conduit 1/2"                 |
| <b>JD</b> 100/50 VAC • 3.9W  | <b>D</b> 48" / 120 cm            |                      | <b>CN</b> Metal conduit with ground 1/2"     |
| DC Voltage                   | <b>E</b> 72" / 180 cm            |                      | <b>EE</b> Hazardous location explosion proof |
| <b>DA</b> 24 VDC • 5.4 W     | <b>F</b> 96" / 240 cm            |                      | <b>JA</b> Square plug-in                     |
| <b>DB</b> 12 VDC • 5.4 W     | <b>J</b> External connector lead |                      | <b>JB</b> Rectangular plug-in                |
| <b>DC</b> 12 VDC • 7.5 W     |                                  |                      | <b>JC</b> Square plug-in with light          |
| <b>EW</b> 24 VDC • 8.0 W     |                                  |                      | <b>JD</b> Rectangular plug-in with light     |
|                              |                                  |                      | <b>JJ</b> Square male only                   |
|                              |                                  |                      | <b>JM</b> Rectangular male only              |
|                              |                                  |                      | <b>KA</b> Mini plug-in                       |
|                              |                                  |                      | <b>KB</b> Mini plug-in with diode            |
|                              |                                  |                      | <b>KC</b> Mini plug-in with LED & diode      |
|                              |                                  |                      | <b>KD</b> Mini plug-in with light            |
|                              |                                  |                      | <b>KE</b> Mini plug-in with light & diode    |
|                              |                                  |                      | <b>KJ</b> Mini plug-in male only             |
|                              |                                  |                      | <b>KK</b> Mini plug-in male only with diode  |

### Pilot Only Options: Bodies & Assemblies

|                             |                               |
|-----------------------------|-------------------------------|
| 41HB-00A-HP-DXXV-YZZ / XXXX | Solenoid operated pilot valve |
| 41HA-00A-HP-RBXX / XXXX     | Bleed pilot valve             |
| 41HB-00A-HP-RBXX / XXXX     | Bleed pilot valve             |

See options above and modifications below.

### Modifications: One Selection Required

|      |                                     |
|------|-------------------------------------|
| PVVT | Viton seals, NPTF threads on pilot  |
| EVVT | Viton seals, BSPPL threads on pilot |
| PVTR | Viton seals, BSPTR threads on pilot |

### Remote Bleed

| 9. Thread Type          |
|-------------------------|
| <b>11</b> NPTF threads  |
| <b>14</b> BSPPL threads |
| <b>15</b> BSPTR threads |

Whole Valve • PV07 + Pilot Valve

