

MAC Pulse Valve PV06 Series



PV06 Series

The MAC Pulse Valve series is designed to be a direct drop-in replacement for existing pulse technology. The MAC solution utilizes a long life, bonded-spool design, instead of the traditional diaphragm style. MAC also uses a balanced pilot valve that isolates the solenoid from airline contamination. Available with integral solenoid pilot as well as bleed pilot configurations.

Direct Drop-in

The MAC Pulse Valve is available with various adapter options. These adapter options allow the MAC valve to directly replace the diaphragm technology with our bonded spool technology without disturbing plumbing. The MAC bleed configuration works with existing remotely located solenoids.

Harsh Environment Compatible

An aluminum die-cast body, Viton® seals and an environmentally protected solenoid are standard features. These materials allow for a wide standard temperature rating and high degree of chemical resistance.

Maintenance

Lower cost of ownership through reduction in downtime due to high reliability. When necessary, maintenance is simplified with available spool kits.

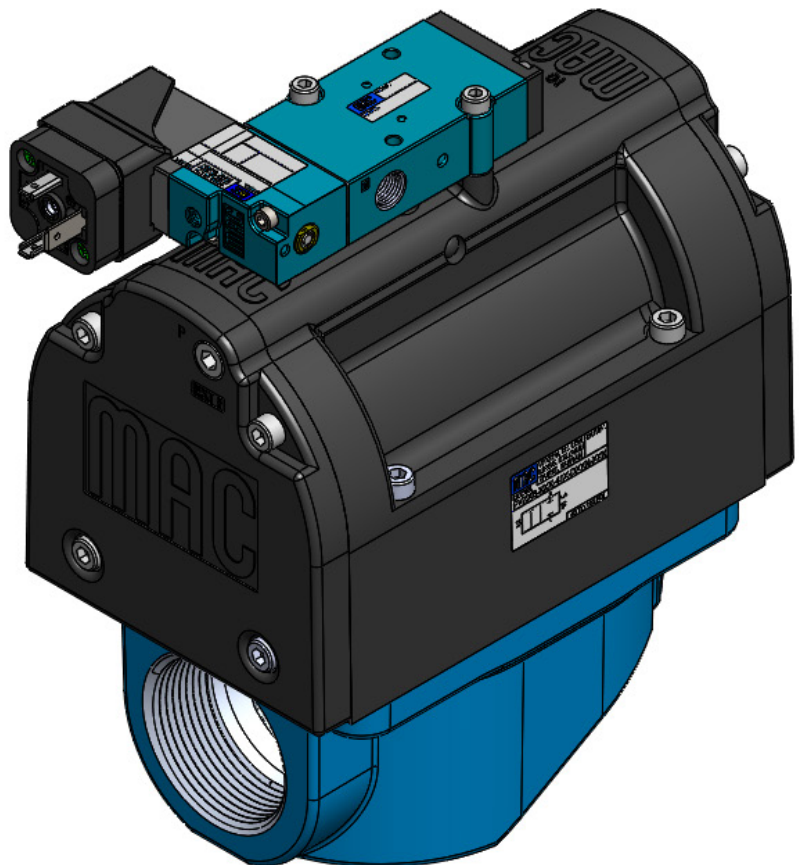
Repair Kits

Kit

Viton® K-PV002-05

Product Characteristics and Performance

Flow	Temp. Range Nitrile	Temp Range Viton	Pressure Range
53.2 Cv	0°F - 140°F -18°C - 60°C	-20°F - 230°F -29°C - 110°C	40 - 120 PSI 2.75 - 8.27 bar



www.LDA.be - LDA@LDA.be - + 32(0)2-266 13 13



MAC Pulse Valve PV06 Series



Integral Pilot **PV06B - XXX - 41P - DXXX - XXX = XXXX**

Remote Bleed **PV06B - XXX - 41P - RBXX = XXXX**

Modifications (see below)

Spool Type

- 0 Base Only
- A N.C. Main W/Memory Spring
Viton® Seals Thru-out

Base Port Size & Thread Type

- 0 Basic Valve No Base
- A 1 1/2" NPTF MAC Base
- C 1 1/2" BSPPL MAC Base
- E 1 1/2" BSPTR MAC Base

Int / Ext Pilot

- 0 Base Only
- A Internal Pilot
- B Ext. Pilot NPTF threads
- C Ext. Pilot BSPPL threads
- D Ext. Pilot BSPTR threads
- E Int. Pilot BSPPL threads
- F Int. Pilot BSPTR threads

Pilot Type

- Integral
- P Piped Exh.

Remote Bleed

- 11 NPTF threads
- 14 BSPPL threads
- 15 BSPTR threads

Solenoid Valve Options

- DXXX - XXX

Voltage

- JA 120/60, 110/50
- JB 240/60, 220/50
- JD 100/60, 100/50, 110/60
- DA 24VDC (5.4W)
- EW 24VDC (8.0W)
- DB 12VDC (5.4W)
- DC 12VDC (7.5W)

Lead Wire Length

- A 18"
- B 24"
- C 36"
- D 48"
- E 72"
- F 96"
- J External
Plug-In Lead

Manual Operator

- 1 Non Locking

Electrical Connector

- BA Grommet
- BK Grommet w/Diode
- CM Metal Conduit 1/2"
- CN Metal Conduit w/Ground 1/2"
- JA Square Plug-in
- JB Rectangular Plug-in
- JC Square Plug-in w/Light
- JD Rectangular Plug-in w/Light
- JJ Square Male Only
- JM Rectangular Male Only
- KA Mini Plug-in
- KB Mini Plug-in w/Diode
- KD Mini Plug-in w/Light
- KE Mini Plug-in w/Light & Diode
- KC Mini Plug-in w/LED & Diode
- KJ Mini Plug-in Male Only
- KK Mini Plug-in Male Only w/Diode

Pilot Only Options - Bodies and Assemblies

Note: Revisions A and B are currently available and identified by 4th character in PN. **Be sure to order the same revision you are replacing**
41HA-00A-HX-DXXV-YYZ=XXXX (solenoid operated pilot valve)
See options above and modifications below
41HB-00A-HX-DXXV-YYZ=XXXX (solenoid operated pilot valve)
See options above and modifications below
41HA-00A-H0-RBXX=XXXX (bleed pilot valve)
See options above and modifications below
41HB-00A-H0-RBXX=XXXX (bleed pilot valve)
See options above and modifications below

Modifications - One Selection Required

PVVT Viton Seals, NPTF threads on pilot
EVVT Viton Seals, BSPPL threads on pilot
PVTR Viton Seals, BSPTR threads on pilot

Spool Kit

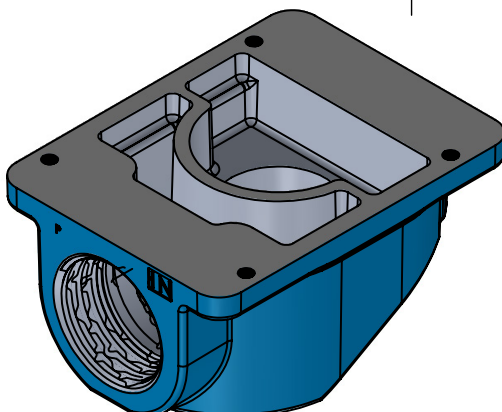
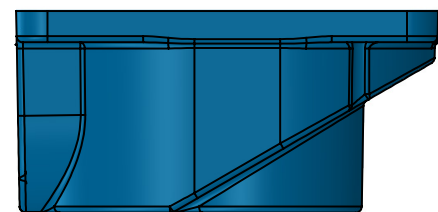
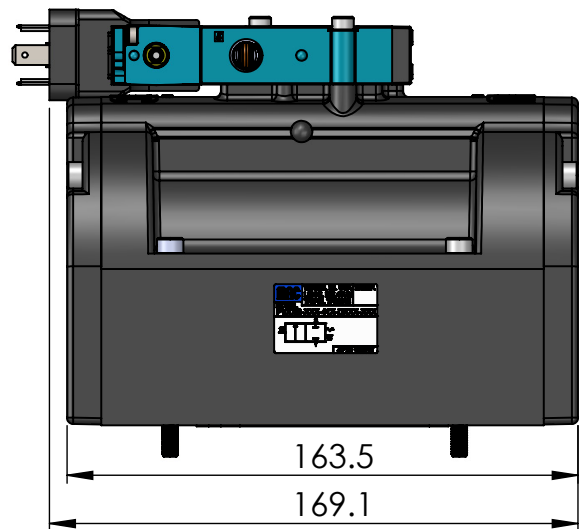
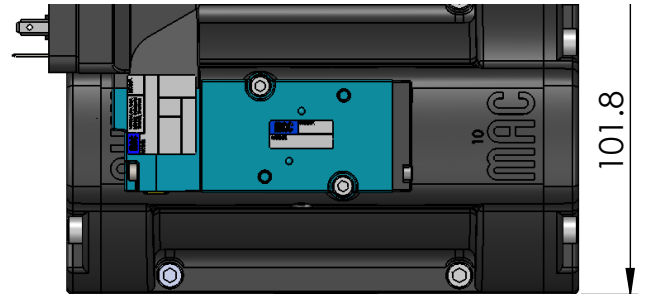
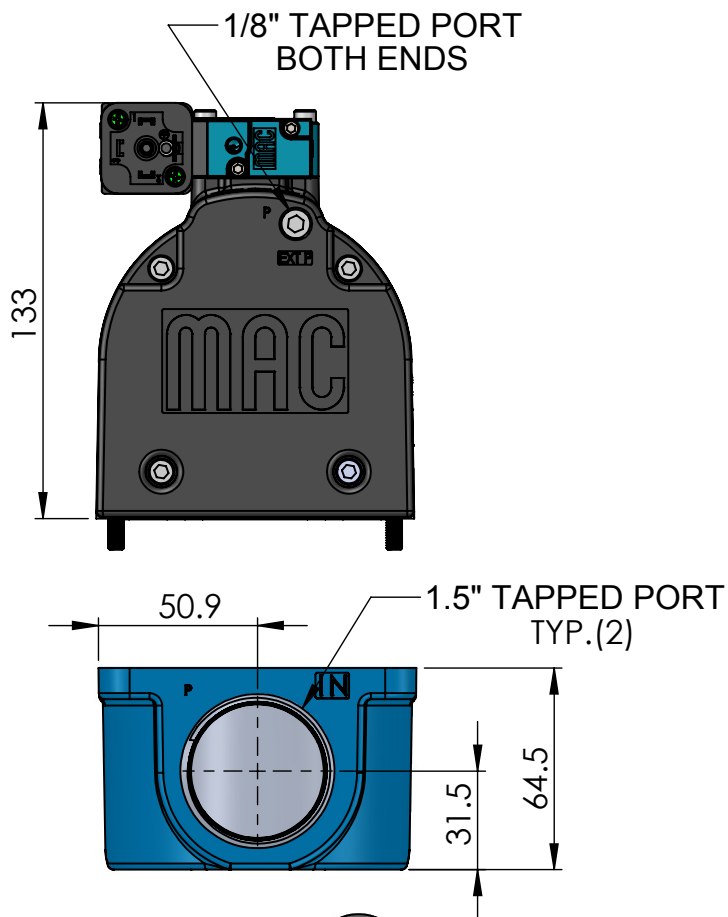
K-PV002-05 Viton (includes seals and spring)



www.LDA.be - LDA@LDA.be - + 32(0)2-266 13 13



MAC Pulse Valve PV06 Series



MAC 1.5" BASE

