

**canfield
connector**

SANDWICH CRT CONDENSATION REMOVAL TIMER

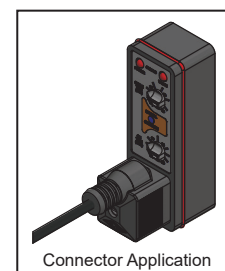
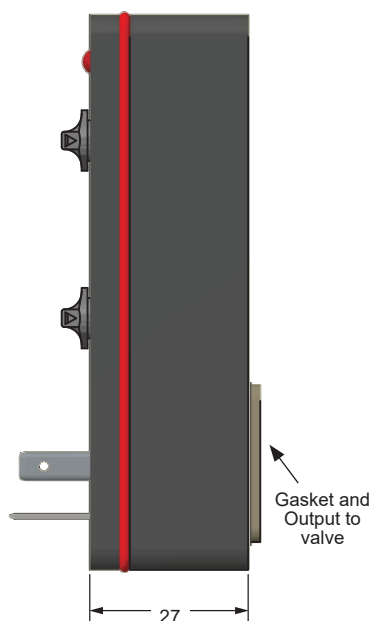
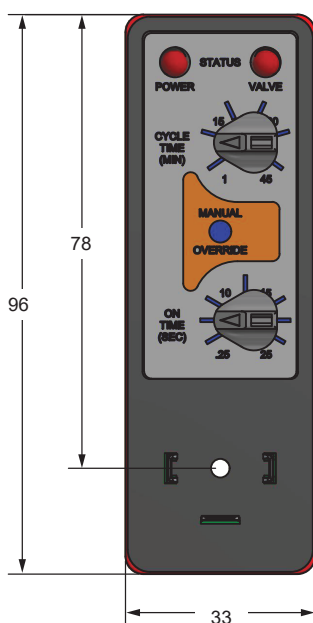
GENERAL DESCRIPTION

This Canfield Connector miniature timer makes any valve, with the DIN Style "A" EN175301-803 (Formerly DIN 43650) electrical interface, able to operate as a compressed air system condensate removal valve. The unit installs in a modular form between an existing coil and connector. No new wiring is necessary. Retrofits on virtually any installation. It works with the valve brand of your choice. The cycle and on times are easily adjustable and two indicator lights show status.



DIMENSIONAL DATA

All dimensions are in millimeters unless otherwise noted.



Connector Application

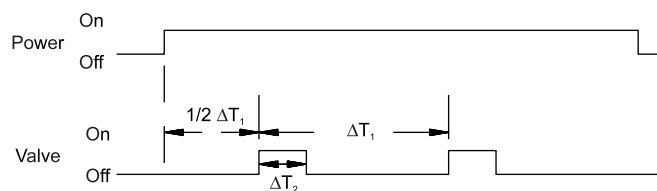


TECHNICAL DATA

Voltage Range	12-60 VDC, 12-240 VAC 50/60 Hz
Max. Output Current	1 Amp AC, 1Amp DC
Transient Suppression	AC - MOV DC - Diode
Materials	Housing: PA
Temp. Range	-20° to +65°C
Environmental Protection	IP 65 and NEMA 4 (When properly installed)
Size	ISO: 18mm pin spacing - DIN Style "A" EN175301-803

TIMER FUNCTION

Upon application of power to the input terminals, the OFF time is initiated. At the end of the preset CYCLE time, the solenoid is energized and the ON time begins. At the end of the preset ON time, power is removed from the solenoid and a new cycle begins. Cycling continues until power is removed from the input terminals.



ΔT_1 = Cycle Rate (1 min. to 45 min.)
 ΔT_2 = Valve ON Time (.25 sec. to 25 sec.)

ORDERING INFORMATION

Contains mounting screw and gasket.

5 9 4 0 - 0 0 0

Power Connection

- 0 - None
- 1 - 5F ISO 2+G 6' cable with 120V plug
- 2 - 5000 ISO 2+G 1/2" conduit
- 3 - 5F ISO 2+G 6' cable

Voltage Range

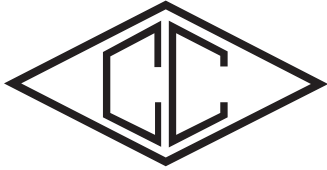
- 2 - 12 - 60 VDC
- 4 - 12 - 120 VAC
- 5 - 120 - 240 VAC



Consult factory for available versions listed by Canadian Standards Association for use with certified electrical equipment.

Ordering Example: 5940 - 10005

Sandwich Timer (CRT), 5F ISO 2+G 6' cable, 120 to 240 VAC



canfield connector

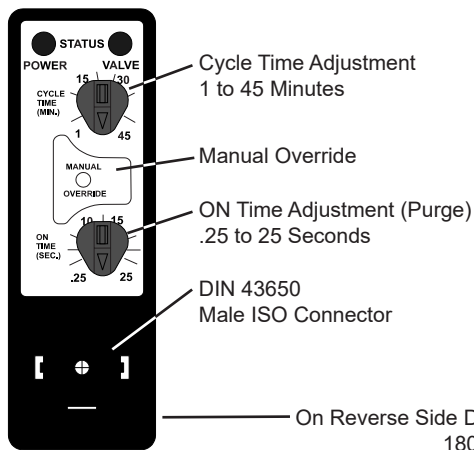
8510 Foxwood Court
Youngstown, Ohio 44514
(330) 758-8299 Fax: (330) 758-8912
www.canfieldconnector.com

CRT

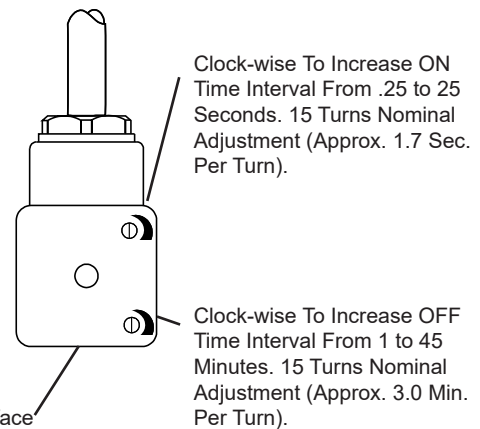
DC MODEL CRT / DC SANDWICH CRT INSTALLATION GUIDE

Timer Adjustment

Sandwich Timer #2



Connector Style #1



Adjustment

DC Connector CRT

When first adjusting the connector CRT determine the approximate ON Time and OFF Time for your application. Adjust the screws CCW at least 20 full turns. This way it is sure to be adjusted to its lowest values (1 min. OFF, .25 sec. ON).

DC Sandwich CRT

Adjust the timer by turning the dimple in the adjustment wheel to correspond to the numerical number on the timer bezel.

Electrical Characteristics

Parameter	Min.	Max.
Supply Voltage	12VDC	240VDC Connector CRT
Supply Voltage	12VDC	60VDC Sandwich CRT
Supply Current	-	.010 Amps
Output Current	-	1.0 Amp
Output Voltage	= (Supply - 2) VDC	= Supply

Environmental Characteristics

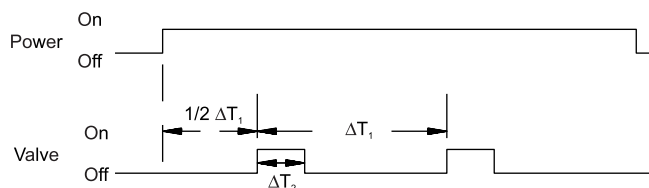
Temperature Range -20 °C +65 °C
Connector Enclosure Designed to IP 65 / NEMA 4 Specifications.



Timer Function

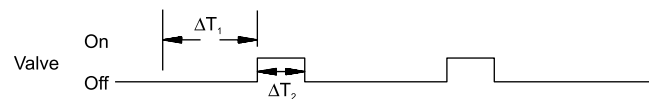
Sandwich CRT

ΔT_1 = Cycle Time (1 min. to 45 min.)
 ΔT_2 = Valve ON Time (.25 sec to 25 sec.)

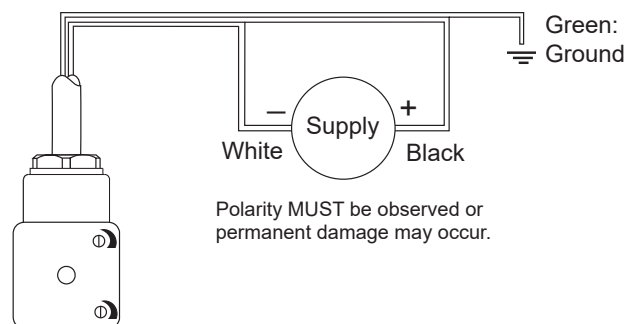
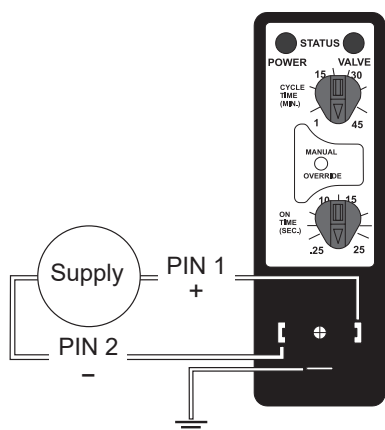


Connector CRT

ΔT_1 = Valve OFF Time (1 min. to 45 min.)
 ΔT_2 = Valve ON Time (.25 sec to 25 sec.)



Hook Up Diagram



Mating Connection
Molded DIN Connector
BRN - PIN 1
BLU - PIN 2
YEL/GRN - GND

Assembly Options

