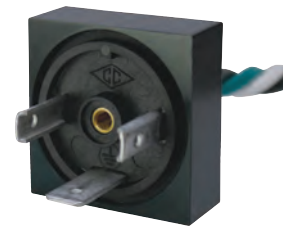


**canfield
connector**

M5 SERIES
MINI, ISO AND SUB-MICRO
MALE
CONNECTORS

GENERAL DESCRIPTION

Canfield Connector M5 Series male connectors are used as electrical quick disconnect interfaces for pneumatic and hydraulic valves and sensors. They are available in standard Industry Standard MINI, DIN Style "A" EN175301-803, Sub-Micro 8mm DIN Style "C" EN 175301-803, Industry Standard 9.4mm, and conduit arrangements. These connectors are built to mate with the Canfield Connector DIN Style female connectors. Some male connectors are available with 2+ ground or 3+ ground terminal options.



ISO, 1/2" Conduit version shown above

DIMENSIONAL DATA

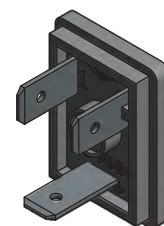
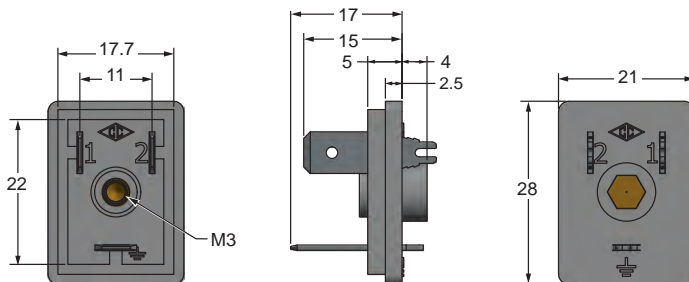
All dimensions are in millimeters unless otherwise noted.

MINI - MOLDING

Ground Down Shown

M03010

Used as an electrical quick connect during the molding, potting, or epoxying process for pneumatic and hydraulic valves or pressure switches.

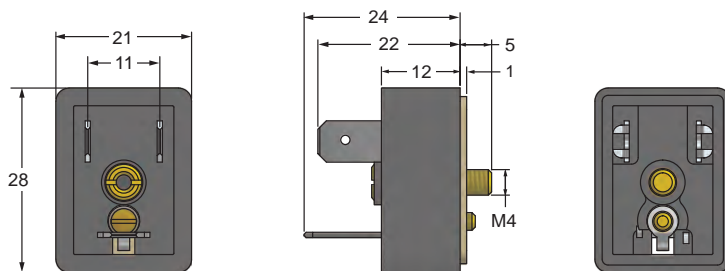


MINI - PLATE MOUNT

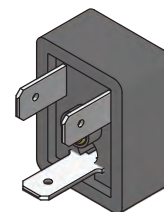
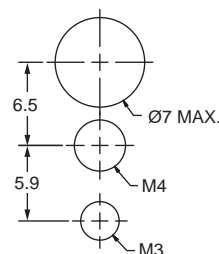
Ground Down Shown

M03110

Used as an electrical quick connect for pneumatic and hydraulic valves.



MOUNTING

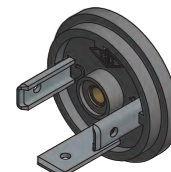
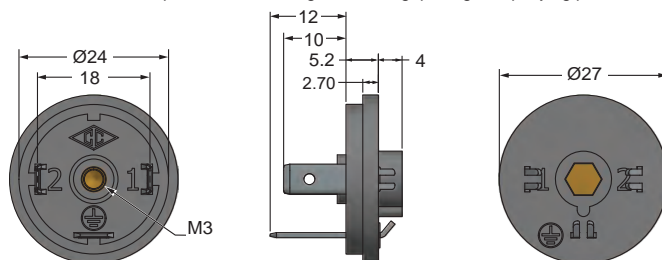


ISO - MOLDING

Ground Down Shown

P10020

Used as an electrical quick connect during the molding, potting, or epoxying process for pneumatic and hydraulic valves or pressure switches.





DIMENSIONAL DATA CONT.

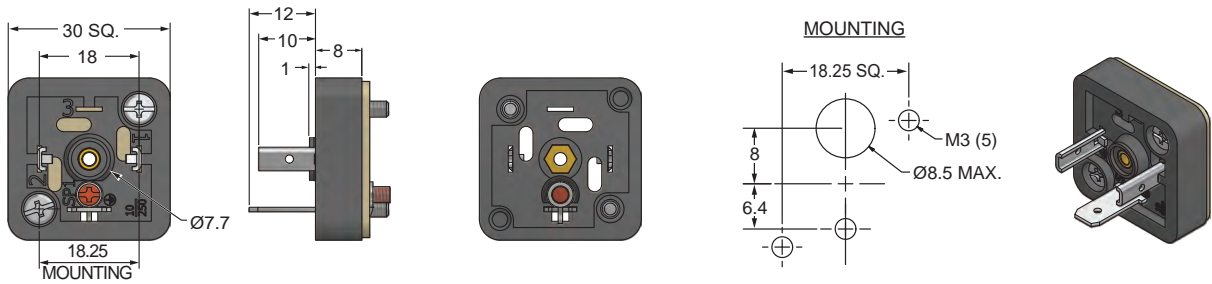
All dimensions are in millimeters unless otherwise noted.

ISO - PLATE MOUNT

Ground Down Shown

P10121

2 Hole – for panel or flat surface mounting.

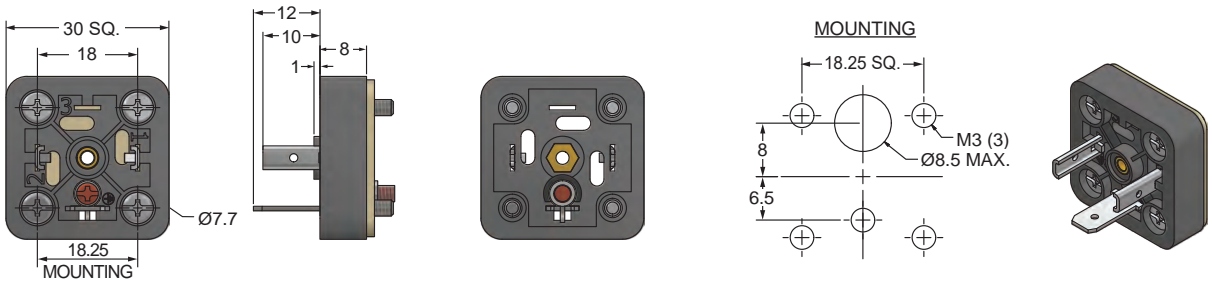


ISO - PLATE MOUNT

Ground Down Shown

P10122

4 Hole - For high vibration, mobile applications.

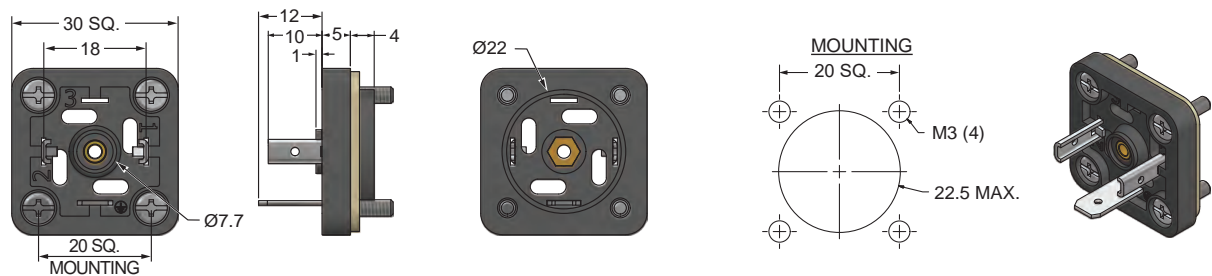


ISO - SHEET METAL MOUNT

Ground Down Shown

P10222

Has an arc over insulating plastic ridge for mounting in sheet metal.

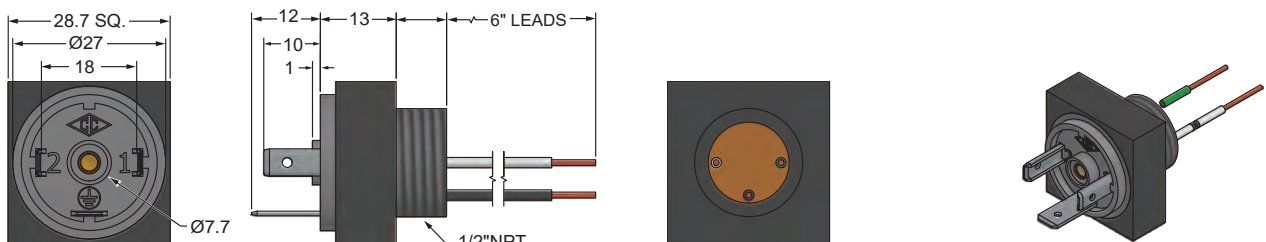


ISO - 1/2" CONDUIT

Ground Down Shown

P10500

Designed to attach to systems with 1/2" conduit connections. Pre-wired for ease of installation and epoxy encapsulated in an aluminum shell with 1/2" NPTF Male Thread Connection.





DIMENSIONAL DATA CONT.

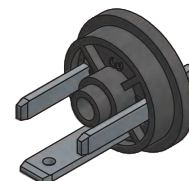
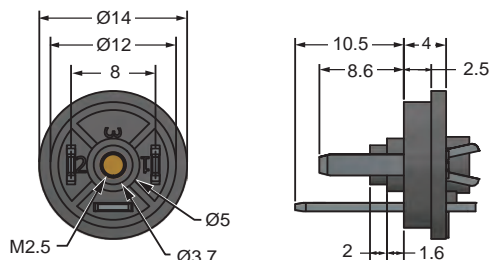
All dimensions are in millimeters unless otherwise noted.

SUB-MICRO 8MM - MOLDING

Ground Down Shown

P20020

Used as an electrical quick connect during the molding, potting, or epoxying process for pneumatic valves or pressure switches.

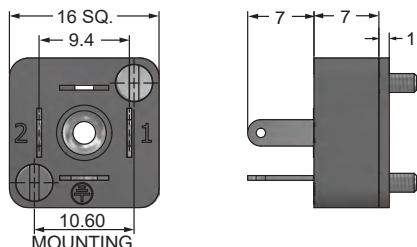


SUB-MICRO 9.4MM - MOLDING

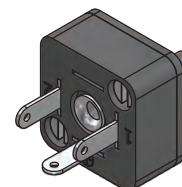
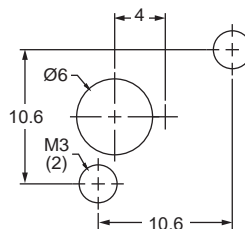
Ground Down Shown

P30120

2 Hole - for panel or flat surface mounting.



MOUNTING



TECHNICAL DATA

Current Max.	ISO: 10 Amps MINI: 10 Amps Sub-Micro: 6 Amps
Voltage Max.	250V AC/DC
Materials	Glass Fiber Reinforced Nylon
Temperature Max.	Housing: -40° to +125°C (+105°C for ISO 1/2" Conduit)
Gasket Temperature Max.	Gasket: Nitrile, -25° to +90°C Silicone: -40° to +125°C
Wire Gauge	ISO Male for 1/2" Conduit: 18 AWG (6" leads)
Size	ISO: 18mm pin spacing - DIN Style "A" EN175301-803 MINI: 11mm pin spacing - Industry Standard Sub-Micro: 8mm pin spacing - DIN Style "C" EN 175301-803 Sub-Micro: 9.4mm pin spacing - Industry Standard
Number of Contacts	ISO: 2+ or 3+ground MINI: 2+ ground Sub-Micro: 2+ or 3+ ground

NOTE: When using MAC Valves with MINI and 9.4mm Sub-Micro, consult our factory.

ORDERING INFORMATION

Each connector kit contains all mounting hardware.

Connector Type

M03010 - MINI for molding
M03110 - MINI for plate*
P10020 - ISO for molding
P10121 - ISO for plate 2 hole
P10122 - ISO for plate 4 hole
P10222 - ISO for sheet metal
P10500 - ISO for 1/2" conduit
P20020 - Sub-Micro 8mm molding
P30120 - Sub-Micro 9.4mm for plate mount

* 2+ Ground Terminals Only

M 5 ☐ ☐ ☐ ☐ ☐ ☐ - ☐ 0 0

Contacts

2 - 2+ ground
3 - 3+ ground

Ordering Example: M5P10222-300

Model P10222 ISO for sheet metal, 3+ ground