

**canfield
connector**

Surge Suppression

P5600 SERIES

MINI AND ISO
MICRO PROTECTIVE
SOLENOID VALVE CONNECTORS

GENERAL DESCRIPTION

The Canfield Connector P5600 Series Micro Protective Connectors are a complete line of field wire style solenoid valve connectors that are offered with internal surge suppression and indicators light options. The connectors are made to meet EN175301-803 (Formerly DIN 43650) solenoid valve connector standards in all styles and configurations. The rugged design features integrated cable strain reliefs or conduit versions. The surge suppression can be tailored to need with 6 distinct versions. These connectors are designed to work seamlessly with your choice of solenoid valve.



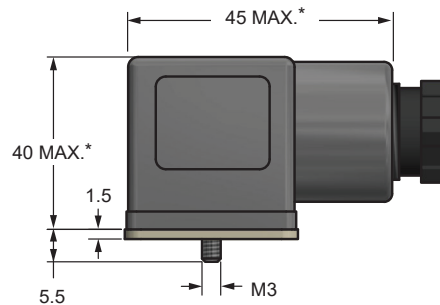
MINI PG9, Lighted version shown above

DIMENSIONAL DATA

All dimensions are in millimeters unless otherwise noted.

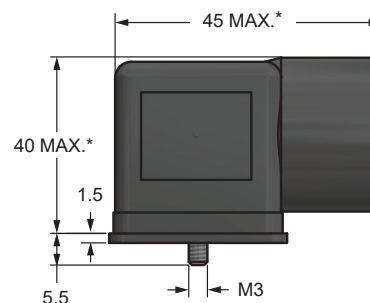
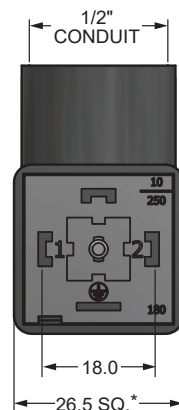
ISO - PG9 / PG11

Ground Down Shown



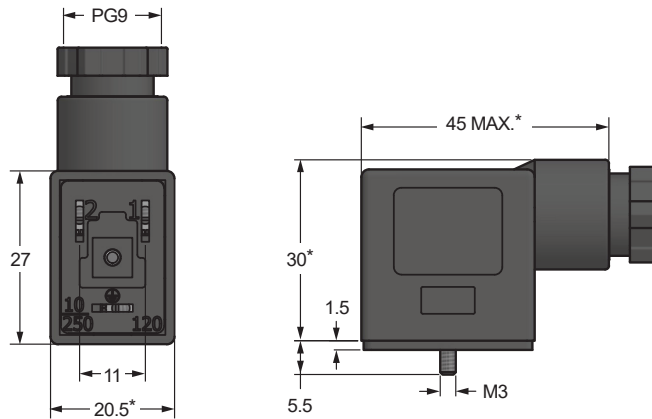
ISO - 1/2" CONDUIT

Ground Down Shown

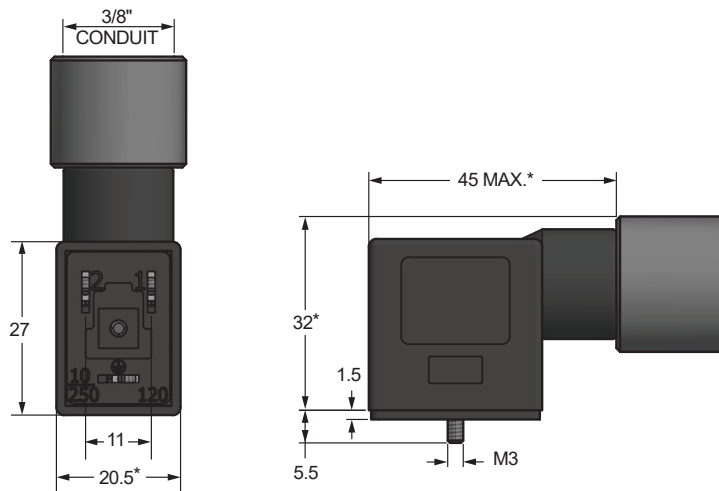


*Dimensions subject to change. For critical specifications, contact factory.

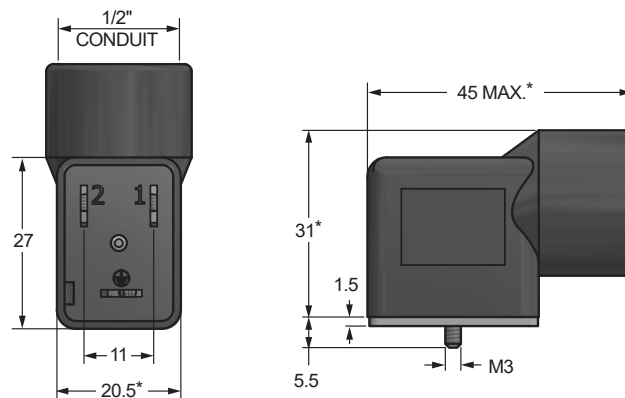
MINI - PG9
Ground Down Shown



MINI - 3/8" CONDUIT
Ground Down Shown



MINI - 1/2" CONDUIT
Ground Down Shown

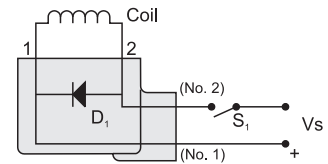


*Dimensions subject to change. For critical specifications, contact factory.

TYPE 1*

- Increases drop out time
- Works only with DC voltage
- Polarity dependent
- Supply and switch are protected

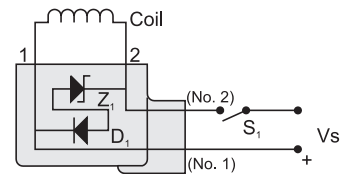
Diode in parallel with coil. When switch (S_1) is opened, the energy stored in the coil is trapped and dissipated by the diode (D_1).



TYPE 2

- Exact limitation of inductive spikes
- Works only with DC voltage
- Polarity dependent
- Supply and switch are protected

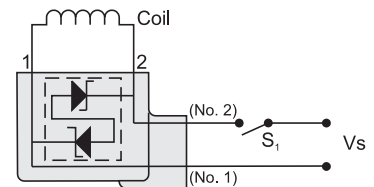
Diode & Zener in parallel with coil. When switch (S_1) is opened, the energy stored in the coil is trapped and dissipated by the diode (D_1) and zener diode (Z_1) and the coil resistance.



TYPE 3

- Good drop out time
- Works with AC or DC voltage
- NOT polarity dependent
- Coil, supply and switch are protected

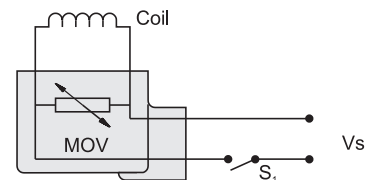
Transorb in parallel with coil. When switch (S_1) is opened or closed, the energy stored in the coil is limited by transorb.



TYPE 5*

- Good drop out time
- Works with AC or DC voltage
- NOT polarity dependent
- Coil, supply and switch are protected

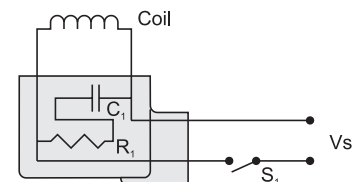
MOV (metal oxide varistor) in parallel with coil. When switch (S_1) is opened or closed, the energy stored in the coil is limited by the MOV.



TYPE 6

- Good drop out time
- Works with AC or DC voltage
- NOT polarity dependent
- Coil, supply and switch are protected

RC Network in parallel with coil. When switch (S_1) is opened or closed, the energy stored in the coil is absorbed by the capacitor (C_1) and dissipated by the resistor (R_1).



*Most Commonly Used



TECHNICAL DATA

Current Max.	ISO / MINI: 10 Amps
Voltage Max.	240 VAC, 120 VDC
Materials	Housing: PA, Black; Gray; Translucent (lighted versions)
Gasket Temperature Max.	Nitrile: -25° to +90°C Silicone: -40° to +125°C
Environmental Protection	Designed for IP 65 / NEMA 4 Dust tight and water resistant
Cable Diameter	PG9: 0.236" to 0.315" O.D. PG11: 0.315" to 0.394" O.D. 1/2" Conduit 0.410" maximum
Wire Gauge	ISO / MINI: 14 AWG Max.
Size	ISO: 18mm pin spacing - DIN Style "A" EN175301-803 MINI: 11mm pin spacing - Industry Standard
Number of Contacts	MINI: 2+ ground ISO: 2 contacts + 2 grounds

NOTE: Slight discoloration may occur to translucent material after prolonged exposure to UV rays.

NOTE: When using MAC Valves with MINI, consult our factory.

WIRING INFORMATION

Terminal Configuration	
	Chassis Ground
1	(+) Pos. / High
2	(-) Neg. / Neut.

ORDERING INFORMATION

Each connector kit contains screw, washer and gasket assembly.



Use a prefix of "G" for Individually Bagged

P 5 0 - 0 0 0 0 0 0

Orientation

1 - Ground down

Additional ground orientations available

Operating Voltage

3 - 6 - 48 VDC

4 - 48 - 120 VDC

5 - 6 - 48 V AC/DC 50/60 Hz

6 - 48 - 120 V AC/DC 50/60 Hz

7 - 120 - 240 V AC/DC 50/60Hz

Gasket

0 - No Gasket

1 - Nitrile

2 - Silicone

3 - Nitrile profile

Connector Type

3 - MINI strain relief PG9

4 - MINI 3/8" conduit

5 - MINI 1/2" conduit

6 - ISO strain relief PG9

7 - ISO strain relief PG11

8 - ISO 1/2" conduit

Housing Color

0 - Black "B" standard. Translucent if lighted.

1 - Gray "A"

Lighting Specification

0 - Unlighted

1 - Lighted

MPC Circuit

1 - Diode (DC Only)

2 - Diode & Zener diode (DC Only)

3 - Transorb (AC/DC)

5 - MOV (AC/DC)

6 - RC network (AC/DC)

Ordering Example: P5103-1311000

Ground down, 6-48 VDC, nitrile gasket, MINI strain relief PG9, diode, lighted



Gasket Detail Options		
	Profile	Flat
MINI		
ISO		
Sub-Micro 8mm		
Sub-Micro 9.4mm		

ALL DIMENSIONS ARE IN MILLIMETERS UNLESS OTHERWISE NOTED
GASKET MATERIAL COLORS MAY VARY