



# LBR Series

## Linear Rotary Actuator

The LBR is a slim, stackable linear rotary actuator with a SMAC HT direct drive brushless motor. The LBR provides a long life cycle, high linear force and rotary torque. Encoder resolutions are available from 5 micron to 1um for application flexibility to optimize on position control. Priced competitively with the added benefit of real time feedback of data required to assure quality. IP67 protection is available as well as a built-in controller with popular communication protocols.

### LBR Series

- Z-Theta motions in one unit
- Actuators can be stacked in multi-axis solutions.

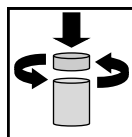
#### Options

- Ethernet/IP communications with M12 connectors optional
- Built-in controller
- IP67 Protection for wash down
- Gear: 4:1 or 16:1
- Vacuum and spring available
- Plating: Cerakote, clear standard, consult factory for other colors

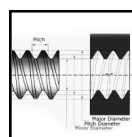


LBR40-050-35-3

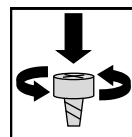
### Applications:



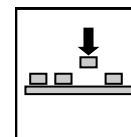
Capping



Thread Inspection



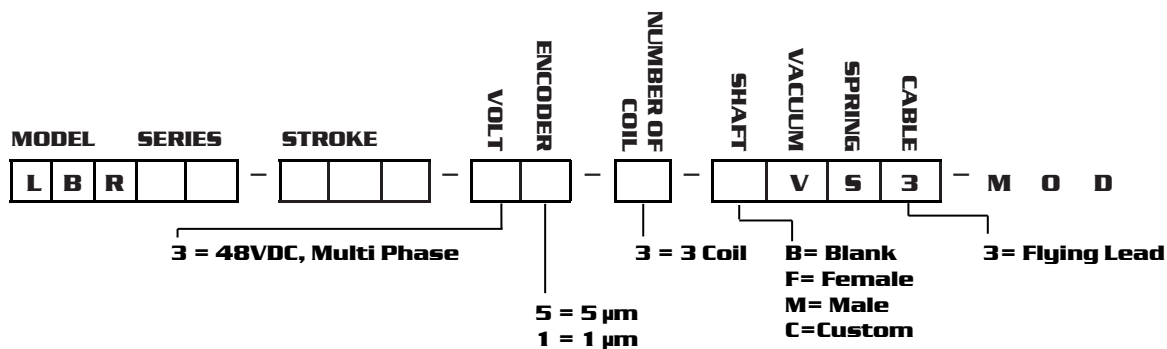
Screw Driving



Pick-n-Place



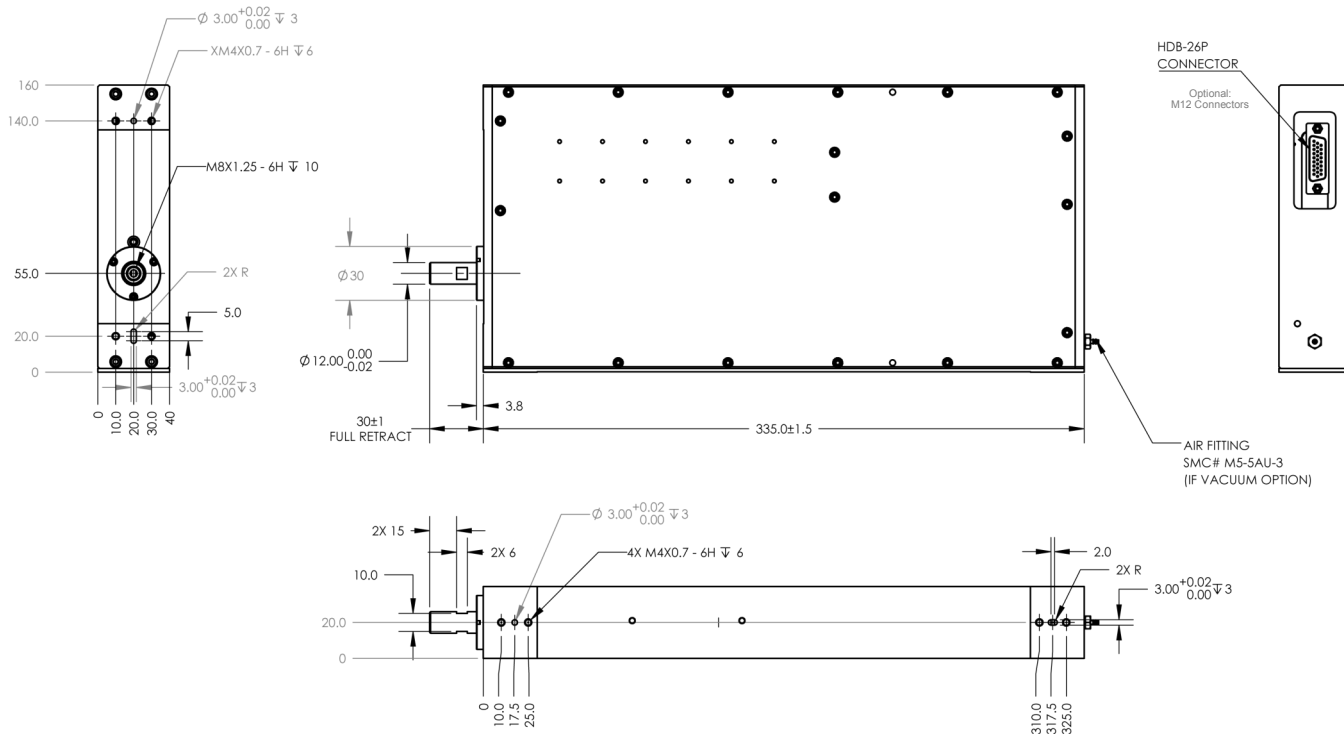
## PART NUMBERING



## SPECIFICATION

Model	Voltage [DC]	Size: LxWxH [mm]	Stroke [mm]	Peak Force [N]	Force Constant [N/A]	Max. Current [Amp]	Moving Mass [kg]	Total Mass [kg]	Peak Torque* [Nm]	Rotary type	Rotary Encoder Resolution	Velocity [rpm]
LBR40-050-35-3	48	335x160x40	50	100	40	2.5	0.9	7.2	0.45	direct	2K	2100
LBR62-050-35-3	48	360x62x165	50	100	40	2.5	1.9	8.5	2.2	direct	2K	750
LBR62-150-35-3	48	460x165x62	150	100	40	2.5	2.0	11.1	2.2	direct	2K	750
LBR62-300-35-3	48	610x165x62	300	100	40	2.5	2.1	14.3	2.2	direct	2K	750

## DIMENSIONS (LBR40-050-35-3)



## Regional Distributor



5807 Van Allen Way, Carlsbad, CA 92008  
+1 760-929-7575 info@smac-mca.com