

MLA8 Series

Gage Actuator

The MLA is an electric gage actuator that provides programmable, precision measurement. It achieves consistent measurement replications and improve your process by reducing gage repeatability and reproducibility (R&R) variation. Repeatable & linearity of force no matter where it is operating in the stroke unlike LVDTs that utilize pneumatics or springs. It achieves smooth and consistent low friction over the entire stroke. The MLA has an internal precision linear guide as well as added side-loading support on the shaft. It can handle higher side-loads than most LVDTs.

MLA8 Series

Dimensions [mm]	95x50x8 (10mm stroke)
Stroke [mm]	10 (1/-0 mm)
Peak Force [N]	4
Encoder Resolution [μ m]	1 standard, 0.5 and 0.1 optional
Total Mass [kg]	0.17
IP Protection	IP54

- Far better Gage R&R (Repeatability and Reproducibility).
- All electric solution.
- "Soft-Land" to find a surface, trace the surface, and feed-back data in real time.
- High side-load bearing capacity.
- More cost effective than most LVDTs.



SMAC

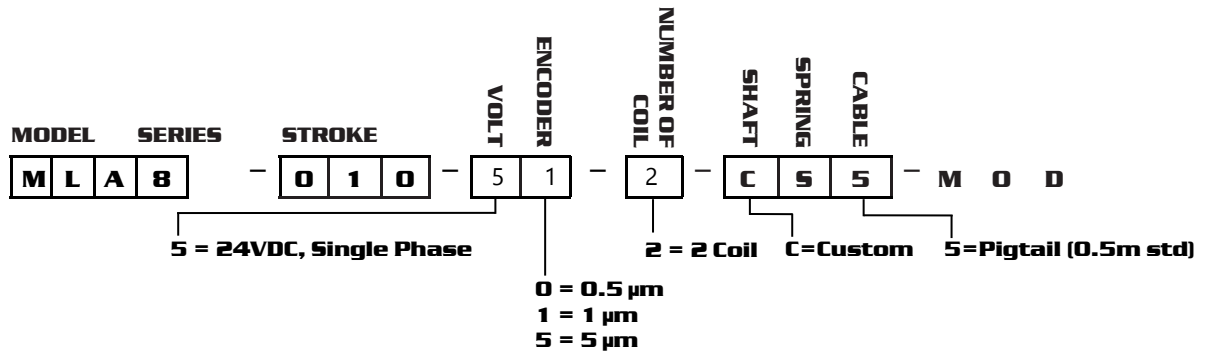
Moving Coil Actuators



www.LDA.be - LDA@LDA.be - + 32(0)2-266 13 13

www.smac-mca.com

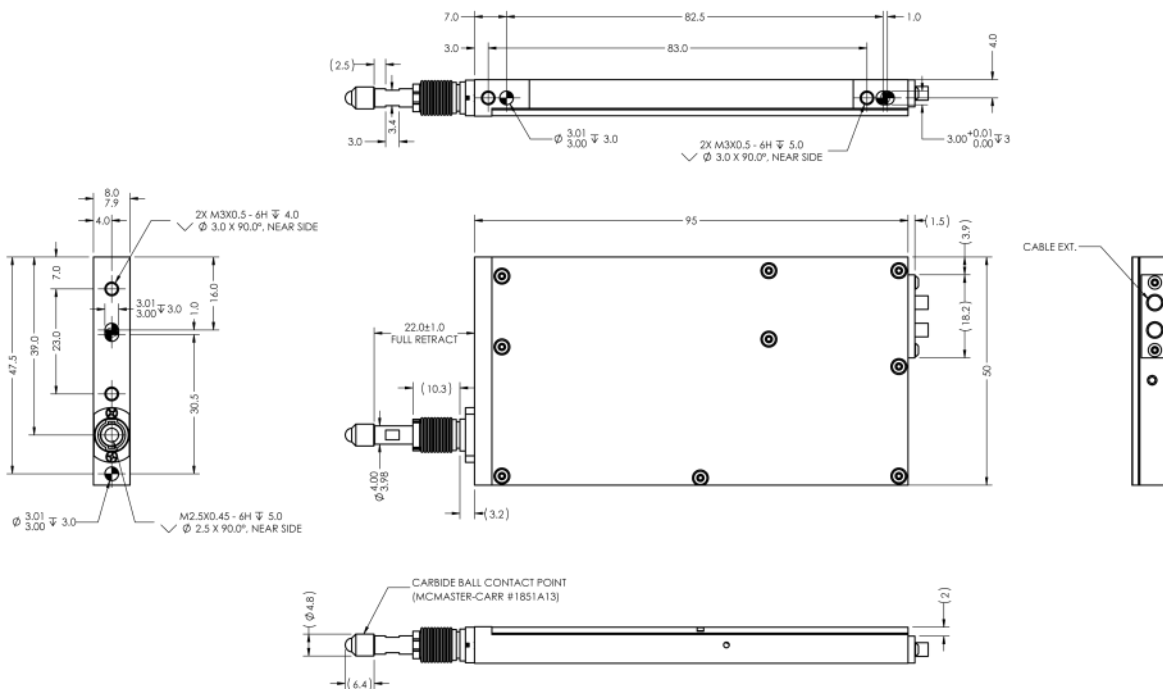
PART NUMBERING



SPECIFICATION

Model	Size: LxWxH [mm]	Stroke [mm]	Peak Force [N]	Moving Mass [kg]	Weight [kg]
MLA8-010-51-2	95x50x8	10	4	0.025	0.17

DIMENSIONS (MLA8-010-51-2 model)



Regional Distributor

 www.LDA.be - LDA@LDA.be - + 32(0)2-266 13 13



5807 Van Allen Way, Carlsbad, CA 92008
+1 760-929-7575 info@smac-mca.com

Specifications subject to change without notice.
Rev.1