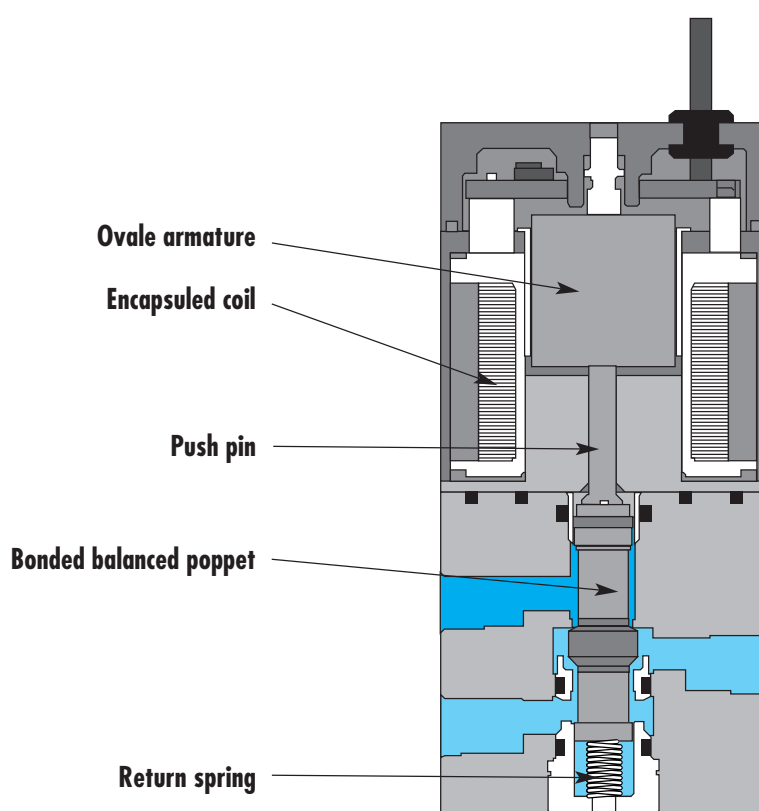




Direct solenoid and solenoid pilot operated valves 8 mm valve

Individual mounting

inline



SERIES FEATURES

- Patented high force MACSOLENOID® for fastest possible response times.
- Bonded balanced poppet for high flow, precise repeatability, and consistent operation.
- Extremely high cycle rate capability.
- Use on lube or non-lube service.
- Low wattage DC solenoids - down to 0.5 W.
- 8 mm direct operated valve.
- Very fast response times.

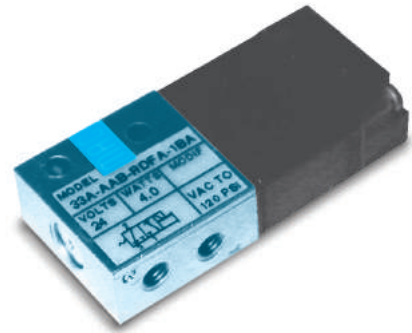


Direct solenoid and solenoid pilot operated valves 8 mm valve

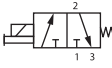
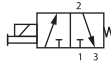
Function	Port size	Flow [Max]	Individual mounting
3/2 NC	M 3	82 NI/min	Inline

OPERATIONAL BENEFITS

1. 8mm valve direct solenoid operated
2. Balanced poppet, immune to pressure variations
3. Short stroke with high flow
4. Patented solenoid develops high shifting forces
5. Low wattage solenoids
6. Powerful return spring
7. Extremely fast response times



HOW TO ORDER

Port size	NC only valve	NC only valve**
		
M3	33A-AAB-R xxx-xxx	33A-BAB-R xxx-xxx

** For use with solenoids above 4.0 W - MOD number required. (Consult factory)

SOLENOID OPERATOR ➤

Rxxx-xxx*

XX	Voltage	X	Wire length	X	Manual operator	XX	Electrical connection
DB	24V=/1.0W	0	No lead wire*	0	No manual operator	BA	Flying leads
DC	24V=/1.8W	A	45 cm	1	Non-locking recessed	BB	Flying leads w/LED
DF	24V=/4.0W	B	60 cm	3	Non-locking extended	BC	Flying leads w/MOV
DH	12V=/1.0W	C	90 cm			BD	Flying leads w/LED & MOV
DJ	12V=/1.8W	D	120 cm			RA	Mini JAC solenoid plug-in
DM	12V=/4.0W	E	180 cm			RB	Mini JAC solenoid plug-in w/LED
						RC	Mini JAC solenoid plug-in w/MOV
						RD	Mini JAC solenoid plug-in w/LED & MOV
						TA	JST Solenoid plug-in
						TB	JST Solenoid plug-in w/LED
						TC	JST Solenoid plug-in w/MOV
						TD	JST Solenoid plug-in w/LED & MOV

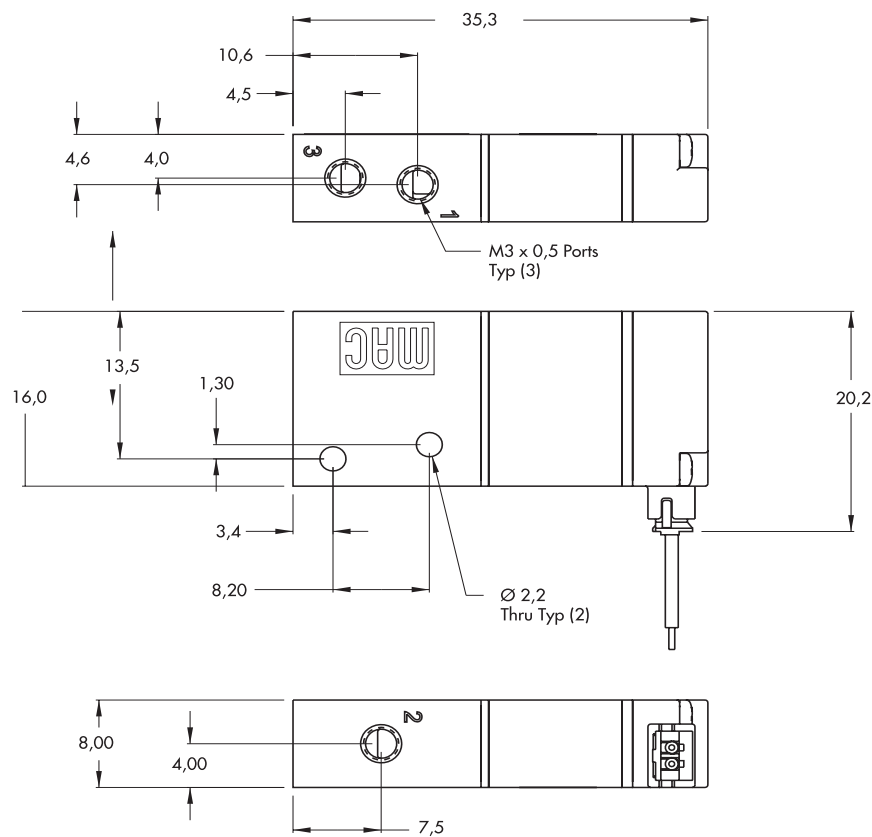
* Not available for flying leads connectors

* Other options available, see page **options**

Washdown capability is possible for the "B" and "R" type electrical connectors. Consult factory for ordering information.

TECHNICAL DATA	
Fluid :	Compressed air, vacuum, inert gases
Pressure range :	Vacuum to 8 bar
Lubrication :	Not required, if used select a medium aniline point lubricant (between 80°C and 100°C)
Filtration :	40 µ
Temperature range :	-18°C to +50°C
Flow :	4W: 82 NI/min (0.82 Cv) - 3W: 62 NI/min (0.62 Cv) - 2.5W: 62 NI/min (0.62 Cv) - 1.8W: 55 NI/min (0.55 Cv) - 1.0W: 30 NI/min (0.3 Cv) - 0.5W: 20 NI/min (0.2 Cv)
Coil :	Class A wire (#26 AWG x18), continuous duty
Voltage range :	-15% to +10% of nominal voltage
Power :	4.0W - 3.0W - 2.5W - 1.8W - 1.0W - 0.5W

DIMENSIONS	Dimensions shown are metric (mm)
------------	----------------------------------



Codification table for voltages / Manual operators / Electrical connections

VALVE CODE ► **R XX X - X XX**
1 2 3 4

1. VOLTAGE		3. MANUAL OPERATOR	
R XX X - XXX	VOLTAGE	R XX X - XXX	MANUAL OPERATOR
DB	24 VDC (1.0W)	0	No operator
DC	24 VDC (1.8W)	1	Non-locking recessed
DD	24 VDC (2.5W)	3	Non-locking extended
DE	24 VDC (3.0W)		
DF	24 VDC (4.0W)		
DH	12 VDC (1.0W)		
DJ	12 VDC (1.8W)		
DK	12 VDC (2.5W)		
DL	12 VDC (3.0W)		
DM	12 VDC (4.0W)		
EA*	24 VDC (60W)		
EB*	24 VDC (90W)		
EC*	24 VDC (230W)		
* MOD numbers required for these voltages (consult factory)			
2. WIRE LENGHT		4. ELECTRICAL CONNECTION	
R XX X - XXX	WIRE LENGHT	ELECTRICAL CONNECTION FOR NON PLUG-IN VALVES	
0*	No lead wire	R XX X - XXX	
A	45 cm - 18"	BA	Flying leads
B	60 cm - 24"	BB	Flying leads with LED
C	90 cm - 36"	BC	Flying leads with MOV
D	120 cm - 48"	BD	Flying leads with LED and MOV
E	180 cm - 72"	DA	Base plug-in
F	240 cm - 96"	DB	Base plug-in with LED
G	300 cm - 120"	DC	Base plug-in with MOV
H	365 cm - 144"	DD	Base plug-in with LED and MOV
P	Base plug-in	RA	Mini JAC solenoid
* Not available for flying leads connector		RB	Mini JAC solenoid with LED
		RC	Mini JAC solenoid with MOV
		RD	Mini JAC solenoid with LED and MOV
		TA	JST solenoid plug-in
		TB	JST solenoid plug-in with LED
		TC	JST solenoid plug-in with MOV
		TD	JST solenoid plug-in with LED and MOV
		ELECTRICAL CONNECTION FOR PLUG-IN VALVES	
		R XX X - XXX	
		PA	Base plug-in
		PB	Base plug-in with light
		PC	Base plug-in with MOV
		PD	Base plug-in with light and MOV