



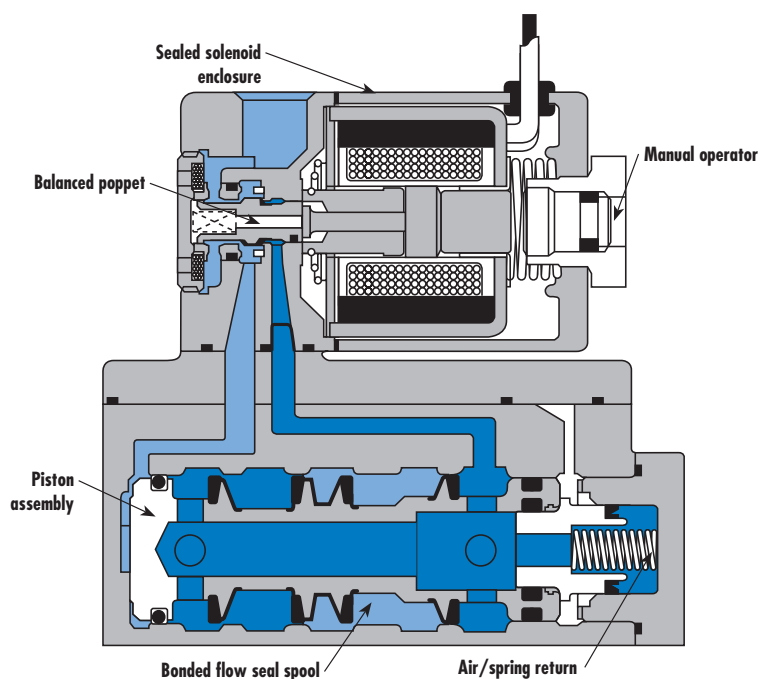
Direct solenoid and solenoid pilot operated valves

Individual mounting

inline

Manifold mounting

stacking



SERIES FEATURES

- The patented MACSOLENOID with its non-burn out feature on AC service.
- Air/spring return on single solenoid valves.
- Use for lube or non-lube service.
- Optional low wattage DC solenoids down to 1 watt.
- Various types of manual operators and electrical enclosures.



VALVE CONFIGURATIONS AVAILABLE

The 900 Series is a small Inline 4-way valve with a flow of up to 1400 NL/min. This series provides fast response, long life and high flow not commonly found in this size valve.

- 2-Pos., single or double operator (solenoid or remote air).
- Individual body or stacking body models.
- Manual and mechanical operators available

SERIES FEATURES-REMOTE AIR PILOT OPERATED VALVES

The remote air versions feature:

- Air/spring return on single remote air valves
- Use for lube or non-lube service.
- Optional remote air pilot, pilot operated models available when application requires a pilot signal below the main valve pressure.

SPECIAL APPLICATIONS:

On all models, energizing the "A" operator (solenoid or remote air) supplies pressure to cylinder port "A" and energizing the "B" operator supplies pressure to cylinder port "B". For the following special applications, additional piping considerations are required.

VACUUM APPLICATIONS (remote Air Models Only)-Connect the vacuum source to the Exhaust port and leave the Inlet open to atmosphere. Also specify MOD 0158 which provides a heavy duty spring in lieu of air/spring.

SELECTOR APPLICATIONS-When using as a selector valve, connect the higher pressure to the Inlet port and the lower pressure to the Exhaust port. On solenoid models, the Inlet pressure must be a minimum of 1.7 bar on singles or 0.7 bar on doubles.



Direct solenoid and solenoid pilot operated valves

Function	Port size	Flow (Max)	Individual mounting
4/2	G1/8" - G1/4"	1200 NI/min	inline

OPERATIONAL BENEFITS

1. Balanced spool, immune to variations of pressure.
2. Short stroke with high flow.
3. Large spool area provides maximum shifting forces.
4. Powerful return force thanks to the combination of mechanical and air springs.
5. Bonded spool with minimum friction, shifting in a glass-like finished bore.
6. Wiping effect eliminates sticking.
7. Pilot valve with balanced poppet, high flow, short and consistent response times.
8. Long service life.



HOW TO ORDER

Port size	Single operator	Double operator
G1/8"	915B-PM- XXYYZZ	925B-PM- XXYYZZ
G1/4"	916B-PM- XXYYZZ	926B-PM- XXYYZZ

SOLENOID OPERATOR ➤

XX Y ZZ*

XX Voltage	Y Manual operator	ZZ Electrical connection
11 110V~/50Hz	1 Non-locking	JB Rectangular connector
12 220V~/50Hz	2 Locking	JD Rectangular connector with light
22 24V~/50Hz		JA Square connector
59 24V~/2,5W		JC Square connector with light
87 24V~/17,1W		BA Flying leads (45 cm)
61 24V~/8,5W		

* Other options available, see page 305.



100%
OF
PRODUCTION
TESTED
100%

WARRANTY
18
MONTHS

TECHNICAL DATA

Fluid :	Compressed air, vacuum, inert gases		
Pressure range :	Single operator : 1.7 to 10 bar Double operator : 0.7 to 10 bar		
Lubrication :	Not required, if used select a medium aniline point lubricant (between 80°C to 100°C)		
Filtration :	40 µ		
Temperature range :	-18°C to 50°C (0°F to 120°F)		
Flow (at 6 bar, ΔP=1bar) :	G1/8" : 800 NI/min, G1/4" : 1200 NI/min		
Coil :	General purpose class A, continuous duty, encapsulated		
Voltage range :	-15% to +10% of nominal voltage		
Protection :	Consult factory		
Power :	~ Inrush : 14.8 VA Holding : 10.9 VA = 1 to 17.1 W		
Response times :	24 V= / 8.5 W	Energize : 8 ms	De-energize : 10 ms
	50Hz/6 W	Energize : 5-10 ms	De-energize : 8-15 ms

Spare parts :

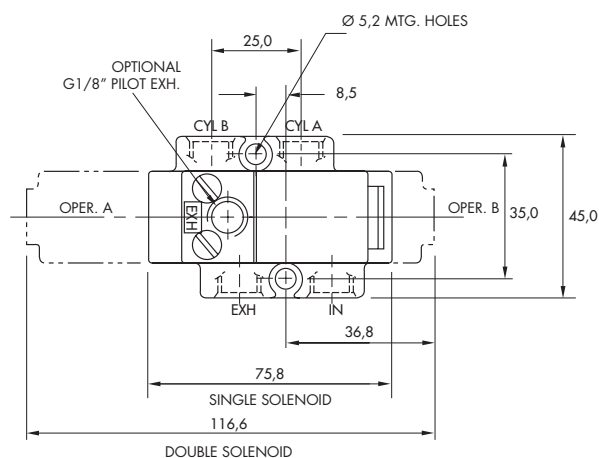
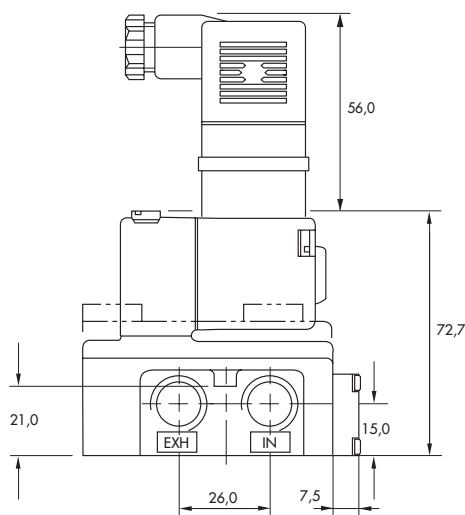
- Solenoid operator (power ≥ 4 W) : D1-XXAA, cover mounting screws 35206 and seal 16234.
- Pilot valve : PME-XXYZZ, including seal 16337. • Mounting screw pilot to main valve : 35219.

Options :

- NPTF threads.

DIMENSIONS

Dimensions shown are metric (mm)



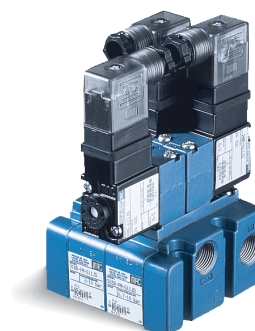


Direct solenoid and solenoid pilot operated valves

Function	Port size	Flow [Max]	Manifold mounting
4/2	G1/8" - G1/4" - G3/8"	1400 NI/min	stacking

OPERATIONAL BENEFITS

1. Balanced spool, immune to variations of pressure.
2. Short stroke with high flow.
3. Large spool area provides maximum shifting forces.
4. Powerful return force thanks to the combination of mechanical and air springs.
5. Bonded spool with minimum friction, shifting in a glass-like finished bore.
6. Wiping effect eliminates sticking.
7. Pilot valve with balanced poppet, high flow, short and consistent response times.
8. Long service life.



HOW TO ORDER

Port size	Single operator	Double operator
G1/8"	917B-PM- XXYYZZ	927B-PM- XXYYZZ
G1/4"	918B-PM- XXYYZZ	928B-PM- XXYYZZ
G3/8"	919B-PM- XXYYZZ Mod 005	N/A

SOLENOID OPERATOR >

XX Y ZZ*

XX Voltage	Y Manual operator	ZZ Electrical connection
11 110V~/50Hz	1 Non-locking	JB Rectangular connector
12 220V~/50Hz	2 Locking	JD Rectangular connector with light
22 24V~/50Hz		BA Flying leads (45 cm)
59 24V~/2,5W		
87 24V~/17,1W		
61 24V~/8,5W		

* Other options available, see page 305.

End plate kit required (Port size : G3/8") : M-09001-01P.

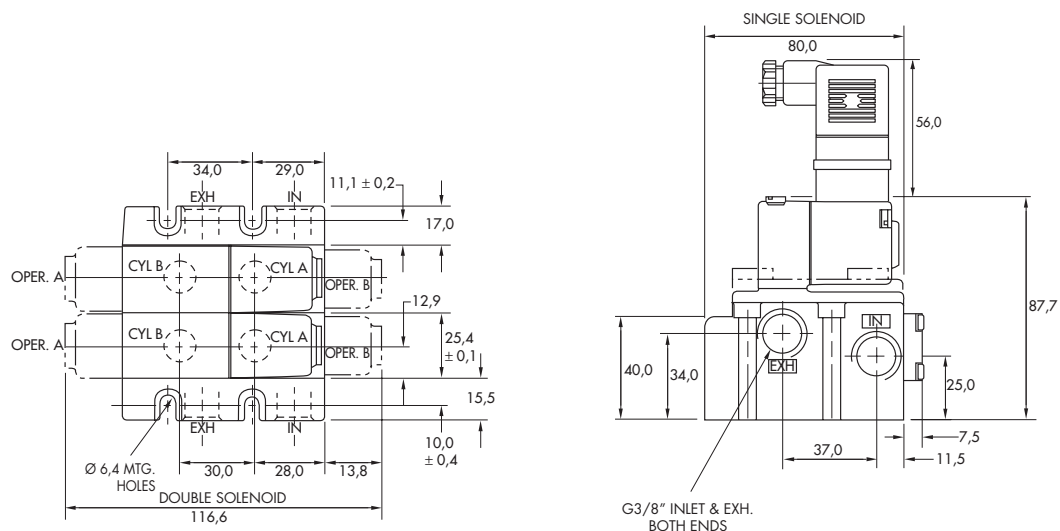


TECHNICAL DATA			
Fluid :	Compressed air, vacuum, inert gases		
Pressure range :	Single operator : 1.7 to 10 bar Double operator : 0.7 to 10 bar		
Lubrication :	Not required, if used select a medium aniline point lubricant (between 80°C to 100°C)		
Filtration :	40 µ		
Temperature range :	-18°C to 50°C (0°F to 120°F)		
Flow (at 6 bar, ΔP=1bar) :	G1/8" : 1200 NI/min, G1/4" : 1400 NI/min, G3/8" : 1400 NI/min		
Coil :	General purpose class A, continuous duty, encapsulated		
Voltage range :	-15% to +10% of nominal voltage		
Protection :	Consult factory		
Power :	~ Inrush : 14.8 VA Holding : 10.9 VA = 1 to 17.1 W		
Response times :	24 V=/8.5 W	Energize : 8 ms	De-energize : 10 ms
	50Hz/6 W	Energize : 5-10 ms	De-energize : 8-15 ms

- Spare parts :
- Solenoid operator (power ≥ 4 W) : D1-XXAA, cover mounting screws 35206 and seal 16234.
 - Pilot valve : PME-XXYZZ, including seal 16367. • Mounting screw pilot to main valve : 35208.
 - Pressure seal between valves : 16358. • Tie-rod (x2) : 19615. • Inlet & exhaust isolator : N-09002. • Inlet isolator : N-09004.A.
 - Exhaust isolator : N-09003.
- Options :
- NPTF threads.

DIMENSIONS

Dimensions shown are metric (mm)



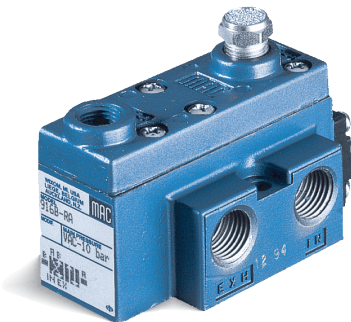


R e m o t e a i r v a l v e s

Function	Port size	Flow (Max)	Individual mounting
4/2	G1/8" - G1/4"	1400 NI/min	Inline

OPERATIONAL BENEFITS

1. Balanced spool, immune to variations of pressure.
2. Short stroke with high flow.
3. The piston (booster) provides maximum shifting forces.
4. Powerful return thanks to the combination of mechanical and air springs.
5. Bonded spool with minimum friction, shifting in a glass-like finished bore.
6. Wiping effect eliminates sticking.
7. Low leakage rate.



HOW TO ORDER

Port size	Single operator	Double operator
G1/8"	915B-RA	925B-RA
G1/4"	916B-RA	926B-RA

Air pilot port : G1/8".



100%
OF
PRODUCTION
TESTED
100%

WARRANTY
18
MONTHS

TECHNICAL DATA

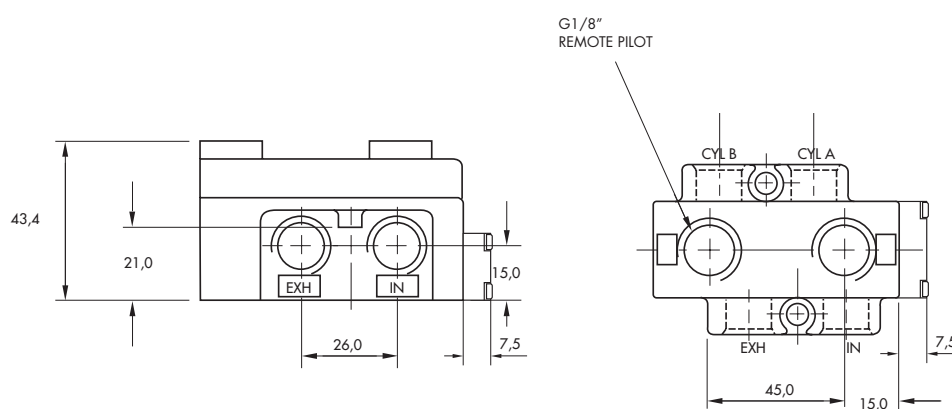
Fluid :	Compressed air, vacuum, inert gases
Pressure range :	Vacuum to 10 bar
Air signal pressure :	Single operator : 1.7 to 10 bar \geq main valve pressure Double operator : 0.7 to 10 bar
Lubrication :	Not required, if used select a medium aniline point lubricant (between 80°C to 100°C)
Filtration :	40 μ
Temperature range :	-18°C to 50°C (0°F to 120°F)
Flow (at 6 bar, $\Delta P=1$ bar) :	G1/8" : 800 NI/min, G1/4" : 1200 NI/min

Spare parts : • Remote air operator (single operator) : R-09002-01P. • Remote air operator (double operator) : R-09002-02P.

Options : • NPTF threads.

DIMENSIONS

Dimensions shown are metric (mm)



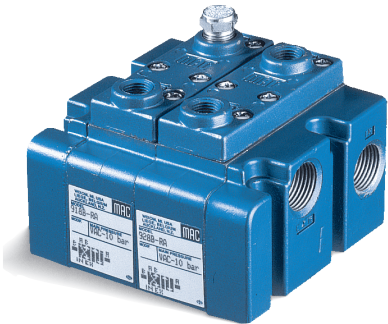


R e m o t e a i r v a l v e s

Function	Port size	Flow (Max)	Manifold mounting
4/2	G1/8" - G1/4"	1400 NI/min	stacking

OPERATIONAL BENEFITS

1. Balanced spool, immune to variations of pressure.
2. Short stroke with high flow.
3. The piston (booster) provides maximum shifting forces.
4. Powerful return thanks to the combination of mechanical and air springs.
5. Bonded spool with minimum friction, shifting in a glass-like finished bore.
6. Wiping effect eliminates sticking.
7. Low leakage rate.



HOW TO ORDER

Port size	Single operator	Double operator
G1/8"	917B-RA	927B-RA
G1/4"	918B-RA	928B-RA

Air pilot port : G1/8".
Manifold fastening kit (G3/8") : M-09001-01P.



TECHNICAL DATA	
Fluid :	Compressed air, vacuum, inert gases
Pressure range :	Vacuum to 10 bar
Air signal pressure :	Single operator : 1.7 to 10 bar ≥ main valve pressure Double operator : 0.7 to 10 bar
Lubrication :	Not required, if used select a medium aniline point lubricant (between 80°C to 100°C)
Filtration :	40 µ
Temperature range :	-18°C to 50°C (0°F to 120°F)
Flow (at 6 bar, ΔP=1bar) :	G1/8" : 800 NI/min, G1/4" : 1200 NI/min

- Spare parts :
- Remote air operator (single operator) : R-09002-01P. • Remote air operator (double operator) : R-09002-02P.
 - Pressure seal between valves : 16358. • Tie-rod (x2) : 19615.
- Options :
- NPTF threads.

