

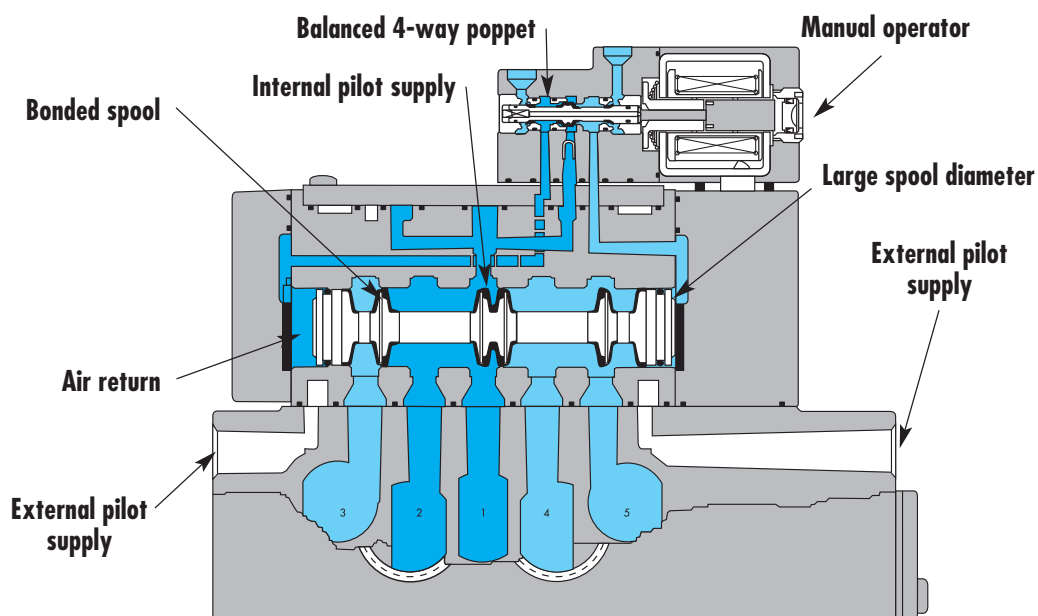
Direct solenoid and solenoid pilot operated valves

Individual mounting

Valve only – No base non "plug-in" Conform to ISO 5599/1	Valve only – No base "plug-in" Conform to ISO 5599/2
--	--

Manifold mounting

Valve only – No base non "plug-in" Conform to ISO 5599/1	Valve only – No base "plug-in" Conform to ISO 5599/2
--	--



SERIES FEATURES

- Plug-in (5599/2) and non plug-in (5599/1) models.
- 2-position, single or double operator. (Solenoid or Remote Air)
- 3-position, double solenoid, open center, closed center, and pressure center.
- Extended or recessed manual operators.
- Single pressure and dual pressure.
- Individual base or add-a-unit manifold base.
- Plug-in, sandwich, single and dual pressure regulators for both individual and manifold valves.

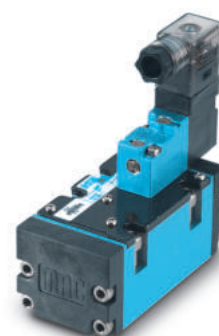


Direct solenoid and solenoid pilot operated valves

Function	Port size	Flow [Max]	Individual/Manifold mounting
5/2, 5/3	G3/8" - G1/2"	3000 NI/minn	Valve only - No base non "plug-in" Conform to ISO 5599/1

OPERATIONAL BENEFITS

1. Unique patented Macsolenoid® for fastest possible response times and virtually burn-out proof AC solenoid operation.
2. Balanced poppet 4-way pilot valve provides maximum shifting forces, precise repeatability and consistent operation.
3. MAC spool and bore combination wipes away contamination, eliminates sticking and allows for use on non-lube service.
4. Large spool area for maximum shifting forces even at minimum operating pressure.
5. Very high flow in a compact package.
6. Plug-in design of valves, bases and regulators for modular assembly and ease of maintenance.
7. Internal or external pilot operation. Manifolds supplied with common external pilot.
8. Air only return. Optional memory spring is also available.
9. Optional low wattage DC solenoid down to 1.0 watt.



HOW TO ORDER

SINGLE PRESSURE MODELS

Pilot air	5/2 Single operator	5/2 Double operator	5/3 Closed centre	5/3 Open centre
Internal	MV-B2A-AAAA-DM-Dxxx-xxx	MV-B2A-ABAA-DM-Dxxx-xxx	MV-B2A-AEAA-DM-Dxxx-xxx	MV-B2A-AFAA-DM-Dxxx-xxx
External "12" end	MV-B2A-AAAB-DM-Dxxx-xxx	MV-B2A-ABAB-DM-Dxxx-xxx	MV-B2A-AEAB-DM-Dxxx-xxx	MV-B2A-AFAB-DM-Dxxx-xxx

DUAL PRESSURE MODELS

Pilot air	5/2 Single operator	5/2 Double operator	5/3 Pressure centre
Internal From port #3	MV-B2A-ACAD-DM-Dxxx-xxx	MV-B2A-ADAD-DM-Dxxx-xxx	MV-B2A-AGAD-DM-Dxxx-xxx
Internal From port #5	MV-B2A-ACAE-DM-Dxxx-xxx	MV-B2A-ADAE-DM-Dxxx-xxx	MV-B2A-AGAE-DM-Dxxx-xxx
External From "12" end	MV-B2A-ACAB-DM-Dxxx-xxx	MV-B2A-ADAB-DM-Dxxx-xxx	MV-B2A-AGAB-DM-Dxxx-xxx

SOLENOID OPERATOR ►

DM-D **xxx-xxx***

XX Voltage	X Lead wire length	X Manual operator	XX Electrical connection
JA 110 V~/50Hz	A 45 cm	1 Non-locking	KA Square connector
JB 220 V~/50Hz	B 60 cm	2 Locking	KD Square connector with light
JC 24 V~/50Hz	J Connector		JB Rectangular connector
FB 24 V=/1,8W			JD Rectangular connector with light
DA 24 V=/5,4W			BA Flying leads
DF 24 V=/12,7W			

* Other options available, see page options.
Note: ISO series, valve and base are ordered separately, see page for base code.

OPTIONS

Valve function :

MV-B2A-**AXX**-XX-Dxxx-xxx

- J** for single operator universal spool (ext. pilot only)
K for double operator universal spool (ext. pilot only)

Pilot style :

MV-B2A-AXXX-**DM**-Dxxx-xxx

- DM** Pilot exhaust muffled
DP Pilot exhaust piped (#10-32)

Spool return :

MV-B2A-AX**AX**-XX-Dxxx-xxx

- A** Standard return
B Memory spring return

TECHNICAL DATA

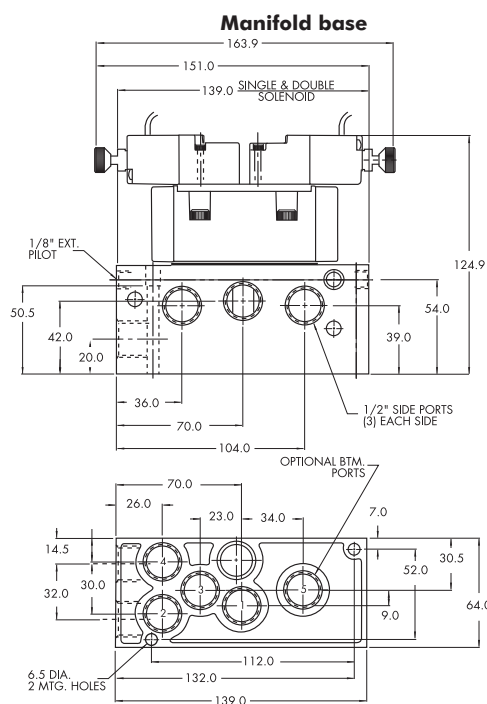
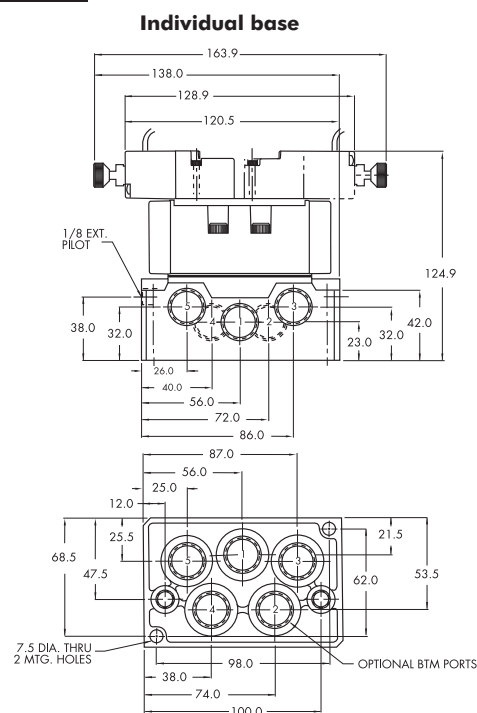
Fluid :	Compressed air, vacuum, inert gases
Pressure range :	Internal pilot: 1,3 to 8 bar External pilot : vacuum to 8 bar
Pilot pressure :	Single operator and 3 positions : 1,3 to 8 bar double operator : 2 to 8 bar
Lubrication :	Not required, if used select a medium aniline point lubricant (between 80°C and 100°C)
Filtration :	40 µ
Temperature range :	-18°C to +50°C
Orifice :	10.5 mm
Flow (at 6 bar, ΔP=1bar) :	G3/8": 2800 NI/min (Cv 2.8) - G1/2": 3000 NI/min (Cv 3,0)
Coil :	Epoxy encapsulated – class A wires – 100% ED (specify mod 0449)
Voltage range :	-15% to +10% of nominal voltage
Protection :	IP65 (electrical connection)
Power :	~ Inrush 7,6 VA Holding: 4,8 VA = 12.7 to 1,0 W
Response times :	24 V=5,4w Energize : 10 ms De-energize : 9.6 ms 110V~/50Hz Energize : 6-15 ms De-energize : 10-17 ms

- Options :
- Sandwich flow controls: FCP2A-BA (screwdriver slot adjustment)
FCP2A-BB (locking knob adjustment)
 - Sandwich regulator, see 'Regulators' section

- Spare parts :
- Pilot valve: DMB-Dxxx-xxx • Valve to base pressure seal: 16576
 - Valve mounting screws (x4): 35413

DIMENSIONS

Dimensions shown are metric (mm)



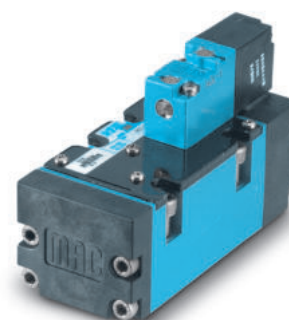


Direct solenoid and solenoid pilot operated valves

Function	Port size	Flow [Max]	Individual/Manifold mounting
5/2, 5/3	G3/8" - G1/2"	3000 NI/min	Valve only - No base "plug-in" Conform to ISO 5599/2

OPERATIONAL BENEFITS

1. Unique patented Macsolenoid® for fastest possible response times and virtually burn-out proof AC solenoid operation.
2. Balanced poppet 4-way pilot valve provides maximum shifting forces, precise repeatability and consistent operation.
3. MAC spool and bore combination wipes away contamination, eliminates sticking and allows for use on non-lube service.
4. Large spool area for maximum shifting forces even at minimum operating pressure.
5. Very high flow in a compact package.
6. Plug-in design of valves, bases and regulators for modular assembly and ease of maintenance.
7. Internal or external pilot operation. Manifolds supplied with common external pilot.
8. Air only return. Optional memory spring is also available.
9. Optional low wattage DC solenoid down to 1.0 watt.



HOW TO ORDER

SINGLE PRESSURE MODELS

Pilot air	5/2 Single operator	5/2 Double operator	5/3 Closed centre	5/3 Open centre
Internal	MV-P2A-AAAA-DM-DxxP-xxx	MV-P2A-ABAA-DM-DxxP-xxx	MV-P2A-AEAA-DM-DxxP-xxx	MV-P2A-AFAA-DM-DxxP-xxx
External "12" end	MV-P2A-AAAB-DM-DxxP-xxx	MV-P2A-ABAB-DM-DxxP-xxx	MV-P2A-AEAB-DM-DxxP-xxx	MV-P2A-AFAB-DM-DxxP-xxx

DUAL PRESSURE MODELS

Pilot air	5/2 Single operator	5/2 Double operator	5/3 Pressure centre
Internal From port #3	MV-P2A-ACAD-DM-DxxP-xxx	MV-P2A-ADAD-DM-DxxP-xxx	MV-P2A-AGAD-DM-DxxP-xxx
Internal From port #5	MV-P2A-ACAE-DM-DxxP-xxx	MV-P2A-ADAE-DM-DxxP-xxx	MV-P2A-AGAE-DM-DxxP-xxx
External From "12" end	MV-P2A-ACAB-DM-DxxP-xxx	MV-P2A-ADAB-DM-DxxP-xxx	MV-P2A-AGAB-DM-DxxP-xxx

SOLENOID OPERATOR ➤

DM-D **XX** P-**XXX***

XX Voltage	X Manual operator	XX Electrical connection
JA 110 V~/50Hz	1 Non-locking	DM Plug-in
JB 220 V~/50Hz	2 Locking	DN Plug-in with diode
JC 24 V~/50Hz		DP Plug-in with M.O.V.
FB 24 V=/1,8W		DG Plug-in with ground
DA 24 V=/5,4W		
DF 24 V=/12,7W		

* Other options available, see page options.

Note: - ISO series, valve and base are ordered separately, see page for base codes.
- Ground wire required for 30 volts or higher.

OPTIONS

Valve function :

MV-P2A-**AXX**-XX-DxxP-xxx

- J for single operator universal spool (ext. pilot only)
- K for double operator universal spool (ext. pilot only)

Pilot style :

MV-P2A-AXX-**DM**-DxxP-xxx

- DM Pilot exhaust muffled
- DP Pilot exhaust piped (#10-32)

Spool return :

MV-P2A-AX**AX**-XX-DxxP-xxx

- A Standard return
- B Memory spring return
- D Standard return with light
- E Memory spring return with light



Remote air valves

Function	Port size	Flow [Max]	Individual/Manifold mounting
5/2 - 5/3	G3/8" - G1/2"	3100 Nl/min	Valve only no base

OPERATIONAL BENEFITS

1. Balanced spool, immune to variations of pressure.
2. Powerful return forces thanks to the combination of mechanical and air springs.
3. Bonded spool with minimum friction, shifting in a glass-like finished bore.
4. Wiping effect eliminates sticking.
5. Long service life.



HOW TO ORDER

SINGLE PRESSURE MODELS

Air spring	5/2 Single operator	5/2 Double operator	5/3 Closed centre	5/3 Open centre
Internal	MV-R2A-BACF		MV-R2A-BEAK	MV-R2A-BFAK
External	MV-R2A-BACG	MV-R2A-BBAK		

DUAL PRESSURE MODELS

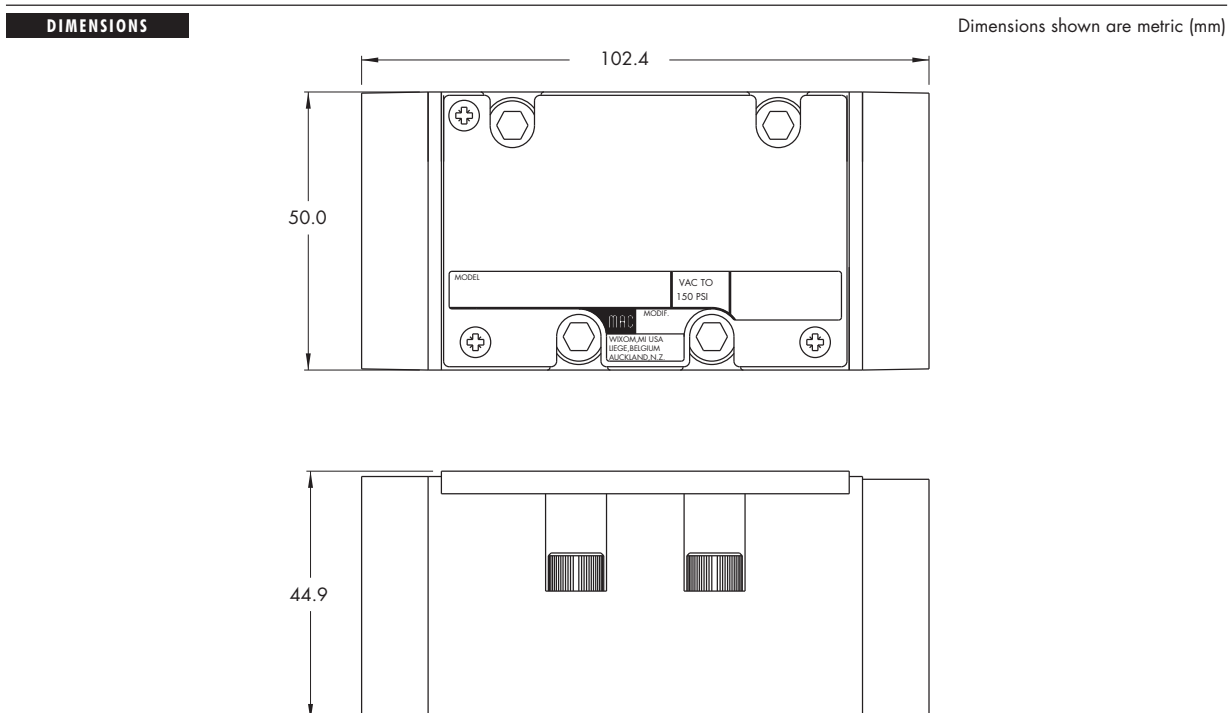
Air spring	5/2 Single operator	5/2 Double operator	5/3 Open centre	5/3 Pressure centre
Internal port #3	MV-R2A-BCCH			
Internal port #5	MV-R2A-BCCJ	MV-R2A-BDAK	MV-R2A-BHAK	MV-R2A-BGAK
External	MV-R2A-BCCG			

Note: ISO series, valve and base are ordered separately, see page for base code.



TECHNICAL DATA	
Fluid :	Compressed air, vacuum, inert gases
Pressure range :	Vacuum to 10 bar
Air signal pressure :	Single/double operator: 1,3 to 10 bar 3 position: 2 to 10 bar
Lubrication :	Not required, if used select a medium aniline point lubricant (between 80°C and 100°C)
Filtration :	40 µ
Temperature range :	-18°C to +50°C
Orifice :	10,6 mm
Flow (at 6 bar, ΔP=1bar) :	G3/8": 2800 NI/min – G1/2" : 3100 NI/min (Cv 3,1)

Spare parts : • Valve to base pressure seal: 16576 • Valve mounting screws (x4): 35413





Bases according to ISO 5599 / 1

Non plug-in base / manifold



HOW TO ORDER

INDIVIDUAL BASE

Port size	Side ports	Bottom ports	Bottom cylinder ports 2 and 4.	Bottom port 1
G3/8"	MB-A2B-121	MB-A2B-123	MB-A2B-122	MB-A2B-124
G1/2"	MB-A2B-131	MB-A2B-133	MB-A2B-132	MB-A2B-134

INDIVIDUAL BASE ACCORDING TO VDMA 24345

Port size	Side ports	Bottom ports
G3/8"	HB-A2B-A	HB-A2B-B

MANIFOLD BASE

Port size	Side ports	Bottom ports	Bottom cylinder ports 2 and 4.	Bottom port 1
G3/8"	MM-A2B-121	MM-A2B-123	MM-A2B-122	MM-A2B-124
G1/2"	MM-A2B-131	MM-A2B-133	MM-A2B-132	MM-A2B-134

Manifold fastening kit : N-63002-01.

MANIFOLD BASE ACCORDING TO VDMA 24345

Port size	Side ports
G3/8"	HM-A2B-C

End plate kit: HM-A2B-D.

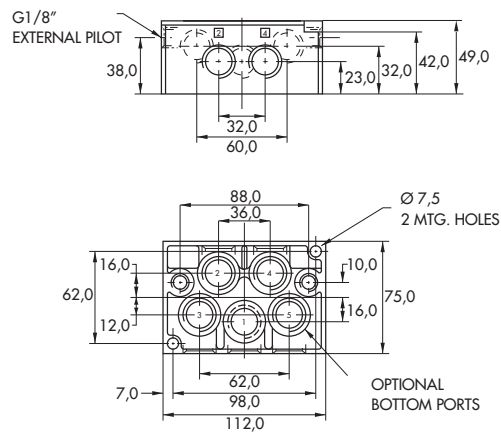
Valve blanking plate: MA2003.
Inlet/exhaust isolator plug: 32839.

DIMENSIONS

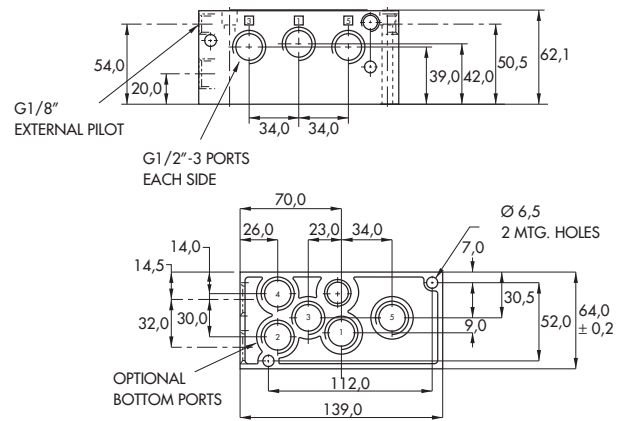
Dimensions shown are metric (mm)

Individual

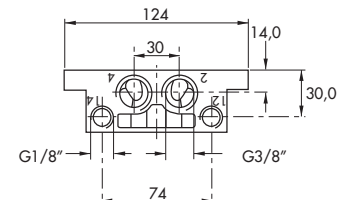
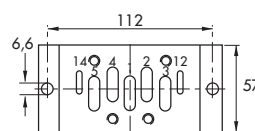
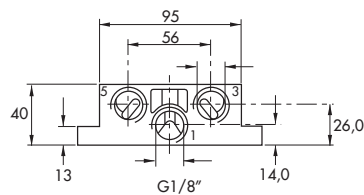
DIN 5599/1



Manifold



VDMA





Bases according to ISO 5599 / 2

Plug-in base / manifold



HOW TO ORDER

INDIVIDUAL BASE

Port size	Wired for	Side ports	Side ports w/ bottom 2 & 4 ports	All side & bottom ports
G3/8"	Single solenoid	MB-P2A-121-A	MB-P2A-122-A	MB-P2A-123-A
	Double solenoid	MB-P2A-121-B	MB-P2A-122-B	MB-P2A-123-B
G1/2"	Single solenoid	MB-P2A-131-A	MB-P2A-132-A	MB-P2A-133-A
	Double solenoid	MB-P2A-131-B	MB-P2A-132-B	MB-P2A-133-B

MANIFOLD BASE

Port size	Wired for	Side ports	Side ports w/ bottom 2 & 4 ports	All side & bottom ports (see note)
G3/8"	Single solenoid	MM-P2A-121-A	MM-P2A-122-A	MM-P2A-123-A
	Double solenoid	MM-P2A-121-B	MM-P2A-122-B	MM-P2A-123-B
G1/2"	Single solenoid	MM-P2A-131-A	MM-P2A-132-A	MM-P2A-133-A
	Double solenoid	MM-P2A-131-B	MM-P2A-132-B	MM-P2A-133-B

Note : Ports 1,3, and 5 are always 1/2".

OPTIONS

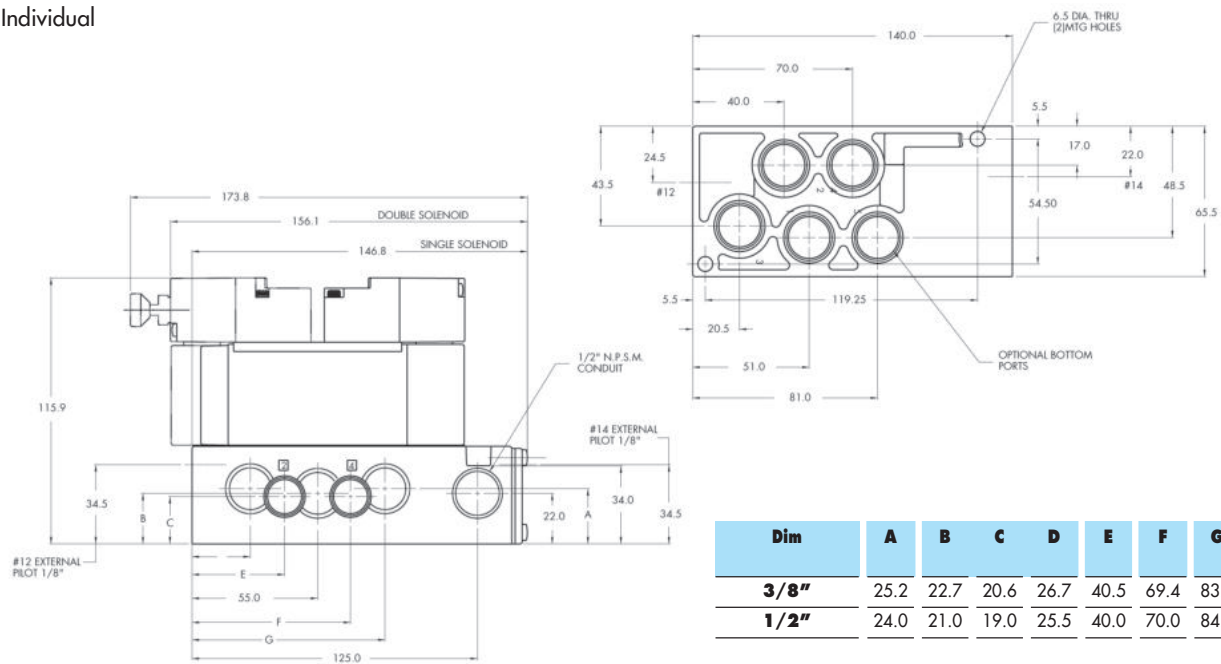
Manifold options :	External pilot	MM-P2A-12x-xx	32 for 3/8" port – common external pilot 33 for 1/2" port – common external pilot
	Terminal strip	MM-P2A-xxx-A (N/A with light)	J wired for sgl solenoid K wired for double solenoid
Base / Manifold option: light(s)		MX-P2A-xxx-xJA	JA 110/120 volt JB 220/240 volt DA 24 volt

Accessories:	M-P2001	Valve blanking plate.
	N-P2004-01	Manifold fastening kit.
	32839	Inlet/exhaust isolator plug.

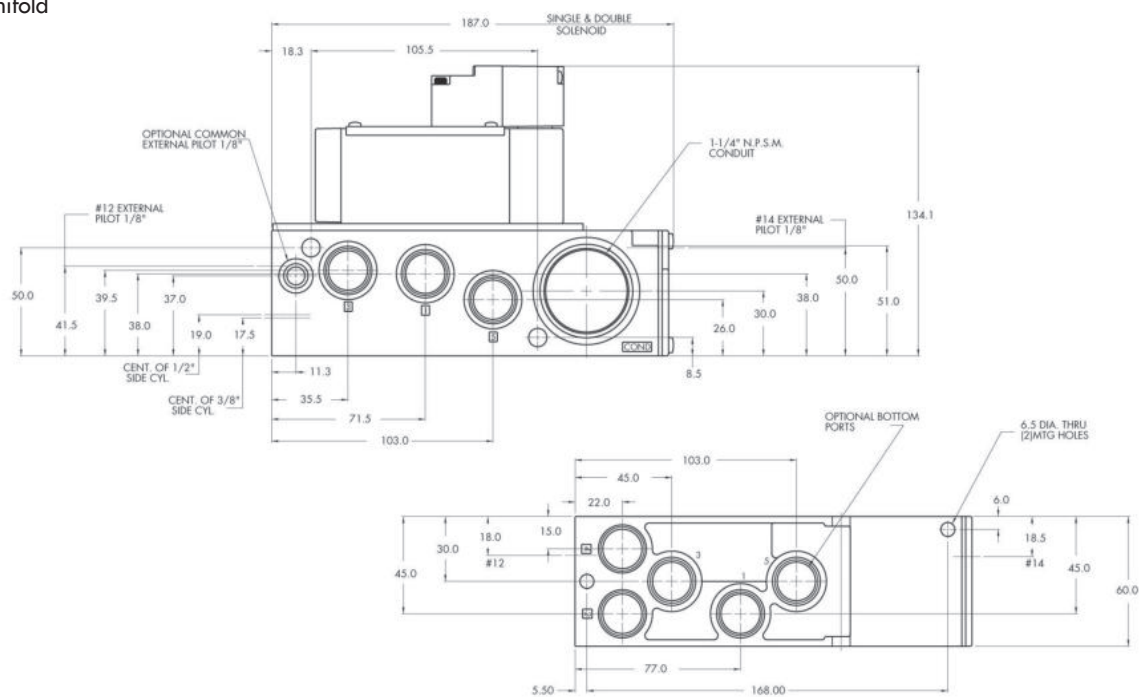
DIMENSIONS

Dimensions shown are metric (mm)

Individual



Manifold



Non plug-in sandwich pressure regulator with manual adjust knob

OPERATIONAL BENEFITS

1. Easy mounting : saves on installation costs in comparison with inline regulators.
2. Allows to have compact, all-included units.
3. Large orifice provides high flow.
4. Various functions available.
5. Simple, reliable and solid design.



HOW TO ORDER

INTERNAL PILOT

Gauge	Single pressure Regulator 14 end Same regulated pressure to ports 2 and 4	Single pressure Regulator 12 end Same regulated pressure to ports 2 and 4	Dual pressure Regulator 14 end Regulated pressure to port 4	Dual pressure Regulator 12 end Regulated pressure to port 2	Dual pressure Dual regulator Two regulated pressures to ports 2 and 4
No gauge	PRA2D-1AAA	PRA2D-1EAA	PRA2D-1BAA	PRA2D-1FAA	PRA2D-1JAA
Non-filled gauge on regulator(s)	PRA2D-1ADA	PRA2D-1EDA	PRA2D-1BDA	PRA2D-1FDA	PRA2D-1JEA
Non-filled gauge opposite to regulator	PRA2D-1CDA	PRA2D-1GDA	PRA2D-1DDA	PRA2D-1HDA	-----
Glycerine filled gauge on regulator(s)	PRA2D-1ABA	PRA2D-1EBA	PRA2D-1BBA	PRA2D-1FBA	PRA2D-1JCA
Glycerine filled gauge opposite to regulator	PRA2D-1CBA	PRA2D-1GBA	PRA2D-1DBA	PRA2D-1HBA	-----

EXTERNAL PILOT AND REMOTE AIR

Gauge	Single pressure Regulator 14 end Same regulated pressure to ports 2 and 4	Single pressure Regulator 12 end Same regulated pressure to ports 2 and 4	Dual pressure Regulator 14 end Regulated pressure to port 4	Dual pressure Regulator 12 end Regulated pressure to port 2	Dual pressure Dual regulator Two regulated pressures to ports 2 and 4
No gauge	PRA2D-2AAA	PRA2D-2EAA	PRA2D-2BAA	PRA2D-2FAA	PRA2D-2JAA
Non-filled gauge on regulator(s)	PRA2D-2ADA	PRA2D-2EDA	PRA2D-2BDA	PRA2D-2FDA	PRA2D-2JEA
Non-filled gauge opposite to regulator	PRA2D-2CDA	PRA2D-2GDA	PRA2D-2DDA	PRA2D-2HDA	-----
Glycerine filled gauge on regulator(s)	PRA2D-2ABA	PRA2D-2EBA	PRA2D-2BBA	PRA2D-2FBA	PRA2D-2JCA
Glycerine filled gauge opposite to regulator	PRA2D-2CBA	PRA2D-2GBA	PRA2D-2DBA	PRA2D-2HBA	-----

* - To be used with dual pressure valves.
Note : regulating range for above models is 0-10 bar.
For other ranges see technical data page.

Main valve body assembly must be external pilot model. Pilots are supplied internally from primary pressure in regulator block. Cannot field convert regulator block from Single Pressure to dual pressure. Body/Block to base mounting screw #19177.

ADJUSTMENT OPTIONS

PRA2D-xxxx

- A for slotted stem adjustment (internal pilot)
- B for slotted stem adjustment (external pilot)
- D for slotted stem with locknut (internal pilot)
- E for slotted stem with locknut (external pilot)



100%
OF
PRODUCTION
TESTED
100%

WARRANTY
18
MONTHS

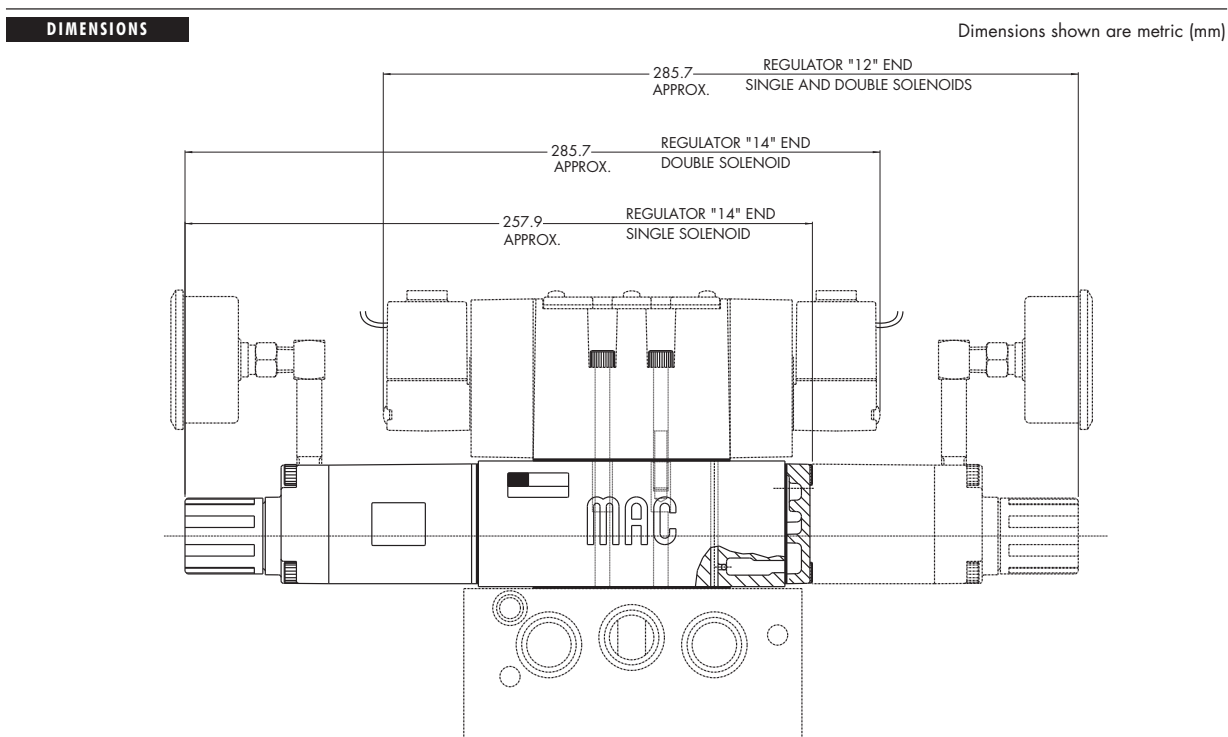
TECHNICAL DATA	
Fluid :	Compressed air, inert gases
Pressure range :	0 to 10 bar
Regulating range :	0 to 10 bar (other ranges see below)
Lubrication :	Not required, if used select a medium aniline point lubricant (between 80°C to 100°C)
Filtration :	40 µ
Temperature range :	-18°C to 50°C
Flow :	2300 NI/min (Cv 2.3)

Spare parts :

- Pressure regulator (less sandwich block) : PRA2D-30AA (KNOB), PRA2D-C0AA (SLOTTED STEM), PRA2D-F0AA (SLOTTED STEM WITH LOCKNUT).
- Gauge : • Glycerine filled : N-62015-01
- Non filled : N-62016-01

Regulating range options : PRA2D-XXXX

- Replace by B - 0 to 6,7 bar
- Replace by C - 0 to 3 bar



Non plug-in sandwich pressure regulator with air pilot adjust

OPERATIONAL BENEFITS

1. Easy mounting : saves on installation costs in comparison with inline regulators.
2. Allows to have compact, all-included units.
3. Large orifice provides high flow.
4. Various functions available.
5. Simple, reliable and solid design.



HOW TO ORDER

INTERNAL PILOT

Gauge	Single pressure Regulator 14 end Same regulated pressure to ports 2 and 4	Single pressure Regulator 12 end Same regulated pressure to ports 2 and 4	Dual pressure Regulator 14 end Regulated pressure to port 4	Dual pressure Regulator 12 end Regulated pressure to port 2	Dual pressure Dual regulator Two regulated pressures to ports 2 and 4
No gauge	PRA2D-4AAA	PRA2D-4EAA	PRA2D-4BAA	PRA2D-4FAA	PRA2D-4JAA
Non-filled gauge on regulator(s)	PRA2D-4ADA	PRA2D-4EDA	PRA2D-4BDA	PRA2D-4FDA	PRA2D-4JEA
Non-filled gauge opposite to regulator	PRA2D-4CDA	PRA2D-4GDA	PRA2D-4DDA	PRA2D-4HDA	-----
Glycerine filled gauge on regulator(s)	PRA2D-4ABA	PRA2D-4EBA	PRA2D-4BBA	PRA2D-4FBA	PRA2D-4JCA
Glycerine filled gauge opposite to regulator	PRA2D-4CBA	PRA2D-4GBA	PRA2D-4DBA	PRA2D-4HBA	-----

EXTERNAL PILOT AND REMOTE AIR

Gauge	Single pressure Regulator 14 end Same regulated pressure to ports 2 and 4	Single pressure Regulator 12 end Same regulated pressure to ports 2 and 4	Dual pressure Regulator 14 end Regulated pressure to port 4	Dual pressure Regulator 12 end Regulated pressure to port 2	Dual pressure Dual regulator Two regulated pressures to ports 2 and 4
No gauge	PRA2D-5AAA	PRA2D-5EAA	PRA2D-5BAA	PRA2D-5FAA	PRA2D-5JAA
Non-filled gauge on regulator(s)	PRA2D-5ADA	PRA2D-5EDA	PRA2D-5BDA	PRA2D-5FDA	PRA2D-5JEA
Non-filled gauge opposite to regulator	PRA2D-5CDA	PRA2D-5GDA	PRA2D-5DDA	PRA2D-5HDA	-----
Glycerine filled gauge on regulator(s)	PRA2D-5ABA	PRA2D-5EBA	PRA2D-5BBA	PRA2D-5FBA	PRA2D-5JCA
Glycerine filled gauge opposite to regulator	PRA2D-5CBA	PRA2D-5GBA	PRA2D-5DBA	PRA2D-5HBA	-----

* - To be used with dual pressure valves.

Main valve body assembly must be external pilot model. Pilots are supplied internally from primary pressure in regulator block. Cannot field convert regulator block from Single Pressure to dual pressure. Body/Block to base mounting screw #19177.

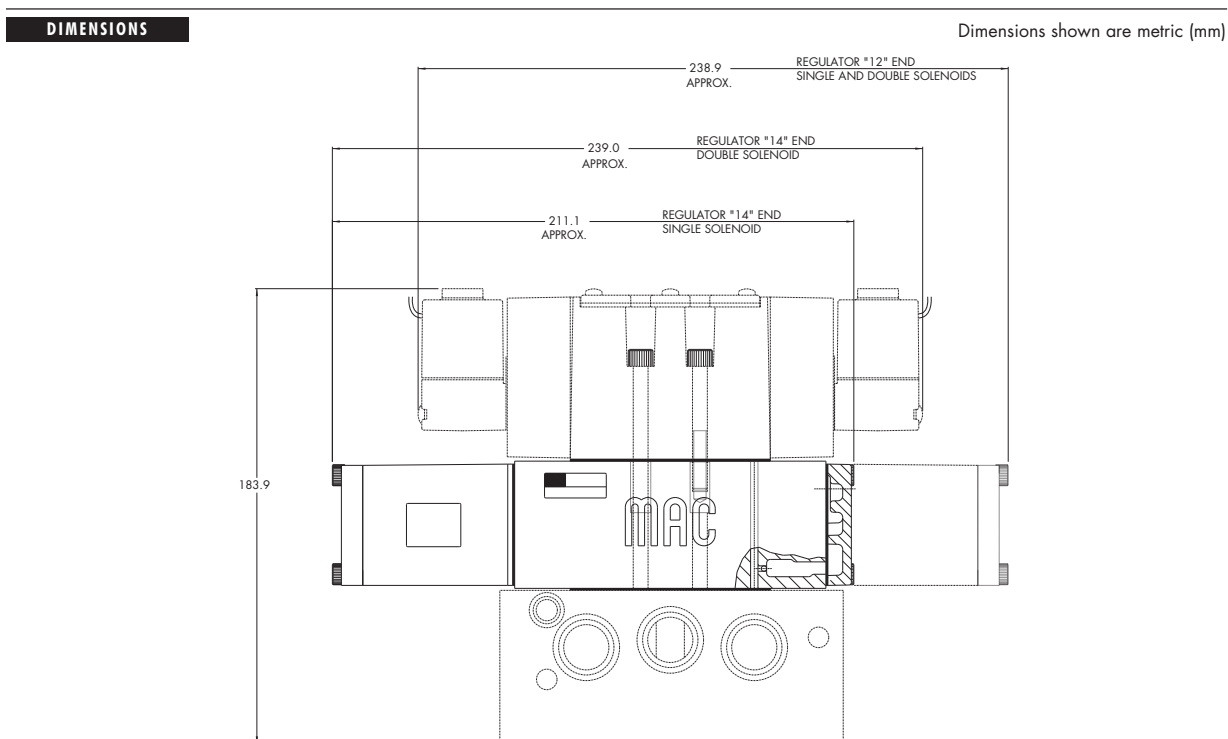


100%
OF
PRODUCTION
TESTED
100%

WARRANTY
18
MONTHS

TECHNICAL DATA	
Fluid :	Compressed air, inert gases
Pressure range :	0 to 10 bar
Regulating range :	0 to 10 bar
Lubrication :	Not required, if used select a medium aniline point lubricant (between 80°C to 100°C)
Filtration :	40 µ
Temperature range :	-18°C to 50°C
Flow :	2300 NI/min (Cv 2.3)

- Spare parts :
- Pressure regulator (less sandwich block) : PRA2D-60AA.
 - Gauge : • Glycerine filled : N-62015-01
 - Non filled : N-62016-01



Plug-in sandwich pressure regulator with manual adjust knob

OPERATIONAL BENEFITS

1. Easy mounting: saves on installation costs in comparison with inline regulators.
2. Compact all-included units.
3. Large orifice provides high flow.
4. Various functions available.
5. Simple, reliable and solid design.



HOW TO ORDER

REGULATORS FOR INTERNAL PILOT (CODED FOR KNOB ADJUSTMENT)

Gauge	Single pressure Regulator 14 end Same regulated pressure to ports 2 and 4	Single pressure Regulator 12 end Same regulated pressure to ports 2 and 4	Dual pressure Regulator 14 end Regulated pressure to port 4	Dual pressure Regulator 12 end Regulated pressure to port 2	Dual pressure Dual regulator Two regulated pressures to ports 2 and 4
No gauge	PRP2B-AAAA	PRP2B-AEAA	PRP2B-ABAA	PRP2B-AFAA	PRP2B-AJAA
Glycerine gauge	PRP2B-AABA	PRP2B-AEBA	PRP2B-ABBA	PRP2B-AFBA	PRP2B-AJCA
Non-filled gauge	PRP2B-AADA	PRP2B-AEDA	PRP2B-ABDA	PRP2B-AFDA	PRP2B-AJEA

REGULATORS FOR EXTERNAL PILOT AND REMOTE AIR (CODED FOR KNOB ADJUSTMENT)

Gauge	Single pressure Regulator 14 end Same regulated pressure to ports 2 and 4	Single pressure Regulator 12 end Same regulated pressure to ports 2 and 4	Dual pressure Regulator 14 end Regulated pressure to port 4	Dual pressure Regulator 12 end Regulated pressure to port 2	Dual pressure Dual regulator Two regulated pressures to ports 2 and 4
No gauge	PRP2B-BAAA	PRP2B-BEAA	PRP2B-BBAA	PRP2B-BFAA	PRP2B-BJAA
Glycerine gauge	PRP2B-BABA	PRP2B-BEBA	PRP2B-BBBA	PRP2B-BFBA	PRP2B-BJCA
Non-filled gauge	PRP2B-BADA	PRP2B-BEDA	PRP2B-BBDA	PRP2B-BFDA	PRP2B-BJEA

* For use with dual pressure valves.

Note: Regulating range for above models is 0-10 bar. For other ranges, see technical data page.

ADJUSTMENT OPTIONS

PRP2B-XXXX

- G** for slotted stem (internal pilot)
- H** for slotted stem (external pilot)
- K** for slotted stem with locknut (internal pilot)
- L** for slotted stem with locknut (external pilot)

Notes:

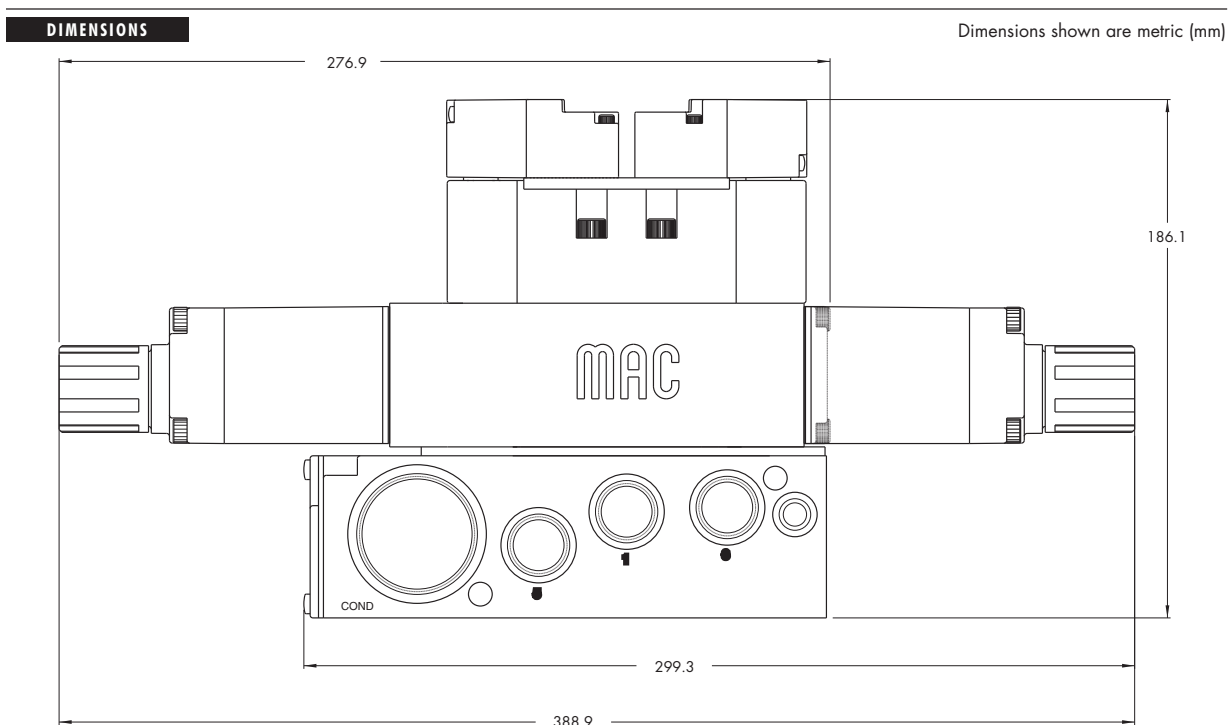
1. Valves used with above models must be external pilot models.
2. Cannot field convert regulator block from single pressure to dual pressure.
3. Cannot field convert from internal pilot to external pilot.
4. Wired for double solenoid valves.



TECHNICAL DATA	
Fluid :	Compressed air, inert gases
Pressure range :	0 to 10 bar
Regulating range :	0 to 10 bar
Lubrication :	Not required, if used select a medium aniline point lubricant (between 80°C and 100°C)
Filtration :	40 µ
Temperature range :	-18°C to +50°C
Flow (at 6 bar, ΔP=1bar)	3100 NI/min (Cv 3.1)

Spare parts :

- Pressure regulator (less sandwich block) PRP2B-C0AA (knob), PRP2B-J0AA (slotted stem), PRP2B-M0AA (slotted stem with locknut)
- Regulator block to base mounting screw: 19177
- Regulating range option: PRP2B-xxxA
 - Replace by B for 0 to 6,7 bar
 - Replace by C for 0 to 3 bar



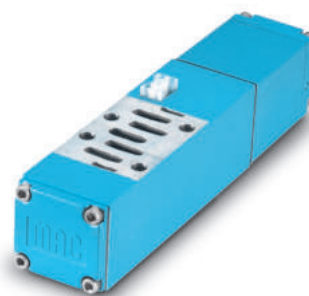


P r e s s u r e r e g u l a t o r s

Plug-in sandwich pressure regulator with air pilot adjust

OPERATIONAL BENEFITS

1. Easy mounting: saves on installation costs in comparison with inline regulators.
2. Compact all-included units.
3. Large orifice provides high flow.
4. Various functions available.
5. Simple, reliable and solid design.



HOW TO ORDER

REGULATORS FOR INTERNAL PILOT

Gauge	Single pressure Regulator 14 end Same regulated pressure to ports 2 and 4	Single pressure Regulator 12 end Same regulated pressure to ports 2 and 4	Dual pressure Regulator 14 end Regulated pressure to port 4 *	Dual pressure Regulator 12 end Regulated pressure to port 2 *	Dual pressure Dual regulator Two regulated pressures to ports 2 and 4 *
No gauge	PRP2B-DAAA	PRP2B-DEAA	PRP2B-DBAA	PRP2B-DFAA	PRP2B-DJAA
Glycerine gauge	PRP2B-DABA	PRP2B-DEBA	PRP2B-DBBA	PRP2B-DFBA	PRP2B-DJCA
Non-filled gauge	PRP2B-DADA	PRP2B-DEDA	PRP2B-DBDA	PRP2B-DFDA	PRP2B-DJEA

REGULATORS FOR EXTERNAL PILOT AND REMOTE AIR

Gauge	Single pressure Regulator 14 end Same regulated pressure to ports 2 and 4	Single pressure Regulator 12 end Same regulated pressure to ports 2 and 4	Dual pressure Regulator 14 end Regulated pressure to port 4 *	Dual pressure Regulator 12 end Regulated pressure to port 2 *	Dual pressure Dual regulator Two regulated pressures to ports 2 and 4 *
No gauge	PRP2B-EAAA	PRP2B-EEAA	PRP2B-EBAA	PRP2B-EFAA	PRP2B-EJAA
Glycerine gauge	PRP2B-EABA	PRP2B-EEBA	PRP2B-EBBA	PRP2B-EFBA	PRP2B-EJCA
Non-filled gauge	PRP2B-EADA	PRP2B-EEDA	PRP2B-EBDA	PRP2B-EFDA	PRP2B-EJEA

* - To be used with dual pressure valves.

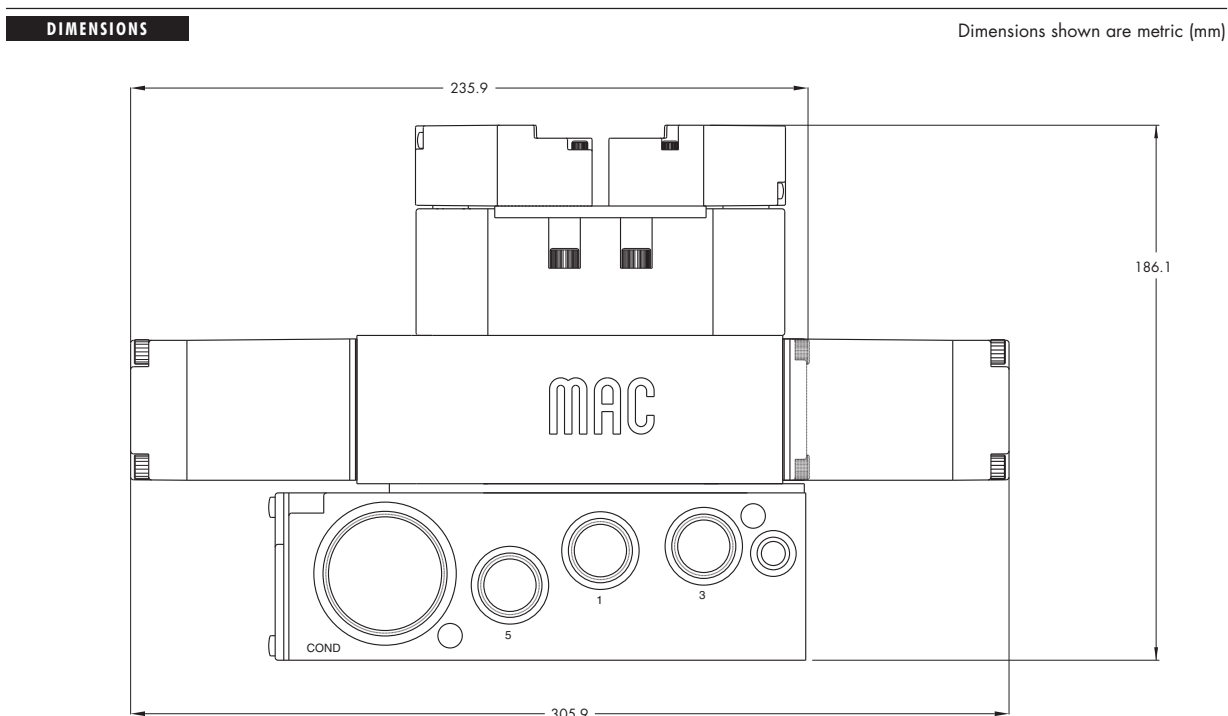
Notes:

1. Valves used with above models must be external pilot models.
2. Cannot field convert regulator block from single pressure to dual pressure.
3. Cannot field convert from internal pilot to external pilot.
4. Wired for double solenoid valves.



TECHNICAL DATA	
Fluid :	Compressed air, inert gases
Pressure range :	0 to 10 bar
Regulating range :	0 to 10 bar
Lubrication :	Not required, if used select a medium aniline point lubricant (between 80°C and 100°C)
Filtration :	40 µ
Temperature range :	-18°C to +50°C
Flow (at 6 bar, ΔP=1bar) :	3100 NI/min (Cv 3.1)

- Spare parts :
- Pressure regulator (less sandwich block): PRP2B-FOAA
 - Body/block to base mounting screw: 19177





0 p t i o n s

Codification table for voltages / Manual operator / Electrical connection

VALVE CODE ► **-DM- D XX X-X XX**
1 2 3 4

1. VOLTAGE		4. ELECTRICAL CONNECTION	
D-XX X-X XX	VOLTAGE	D-XX X-X XX	ELECTRICAL CONNECTION
DA	24V=/5,4W	BA*	Flying leads
DB	12V=/5,4W	BK*	BA with protection diode
DC	12V=/7,5W	BL*	BA with protection varistor
DD	24V=/7,3W	BM**	Flying leads (solenoid plug-in)
DE	12V=/12,7W	BN**	BM with protection diode
DF	24V=/12,7W	BP**	BM with protection varistor
DK	110V=/4,7W	BG**	BM with ground
DJ	28V=/5,2W	BH**	BM with protection diode & ground
DL	64V=/6W	BJ**	BM with protection varistor & ground
DM	36V=/5,3W	CA*	1/2" NPS conduit with flying leads
DN	6V=/6W	CM*	1/2" NPS metal conduit with flying leads
DR	90V=/6,6W	CN*	1/2" NPS metal conduit with flying leads & ground
DS	110V=/7,3W	DG	Plug-in with ground
DT	75V=/5,6W	DH	Plug-in with diode & ground
DP	48V=/5,8W	DJ	Plug-in with M.O.V. & ground
FA	12V=/1,8W	DM	Plug-in
FB	24V=/1,8W	DN	Plug-in with diode
FE	12V=/2,4W	DP	Plug-in with M.O.V.
FF	24V=/2,4W	JB	Rectangular connector
JA	120V~/60Hz, 110V~/50Hz (2,9W)	JD	Rectangular connector with light
JB	240V~/60Hz, 220V~/50Hz (2,9W)	JM	Rectangular connector, male only
JC	24V~/60Hz, 24V~/50Hz (3,7W)	KA	Square connector
JD	100V~/60Hz, 100V~/50Hz, 110V~/60Hz (3,9W)	KB	Square connector with protection diode
JE	220V~/60Hz (3,4W)	KC	Square connector with protection varistor
JF	240V~/50Hz (2,8W)	KD	Square connector with light
JG	200V~/60Hz, 200V~/50Hz (3,9W)	KE	Square connector with light and protection diode
		KF	Square connector with light and protection varistor
		KG	Square connector with light & diode
		KJ	Square connector (male only)
		KK	Square connector with protection diode (male only)
		KL	Square connector with protection varistor (male only)
		TA	Dual tabs with receptacles
		TB	TA with protection diode
		TD	TA with light
		TE	TA with light and protection diode
		TJ	Dual tabs (male only)
		TK	TJ with protection diode
		TM	TJ with light
		TN	TJ with light and protection diode

2. WIRE LENGTH	
D-XX X-X XX	WIRE LENGTH
O	No wires
A	45 cm – 18"
B	60 cm – 24"
C	90 cm – 36"
D	120 cm – 48"
E	180 cm – 72"
F	240 cm – 96"

3. MANUAL OPERATOR	
D-XX X-X XX	MANUAL OPERATOR
0	No operator
1	Non-locking recessed
2	Locking recessed
3	Non-locking extended
4	Locking extended

* From Lead wire length options choose A through F
 ** From Lead wire length options choose O through F
 Note: When coil is above 30 volts, a ground wire is required. Applies to options with flying leads.